

VEHICLE SAFETY PRODUCT CATALOGUE.

**KEY PRODUCTS
& SOLUTIONS.**

CAMERAS.

DASH CAMS.

MONITORS.

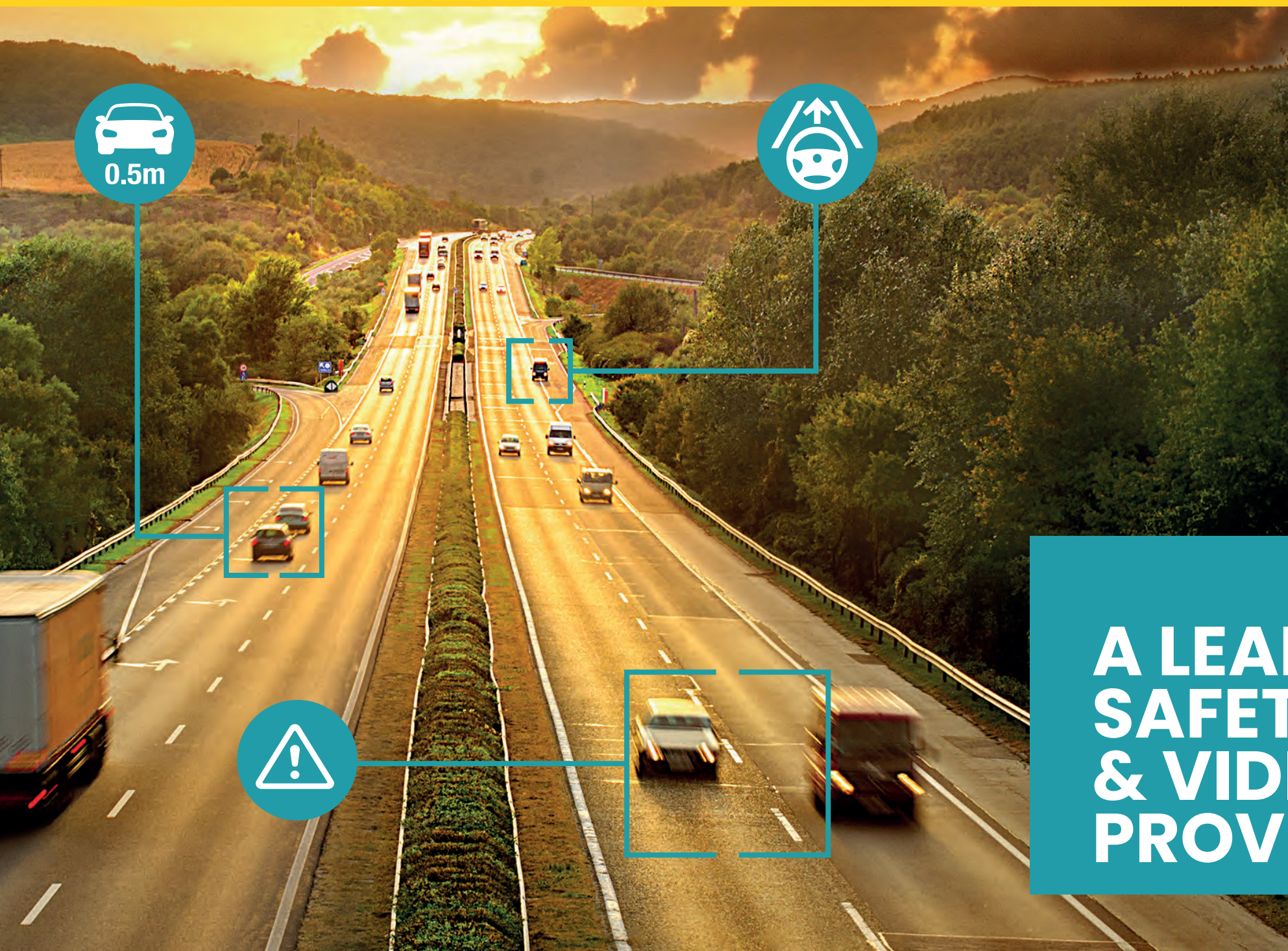
DVR SOLUTIONS.

SENSORS & ALARMS.

FORS & DVS.

HEAVY-DUTY AUDIO.





EchoMaster is a global leader of vehicle safety products and video telematics solutions and a brand of AAMP Global.

AAMP Global is a worldwide supplier of vehicle aftermarket and OEM technology committed to providing end-to-end solutions for their commercial partners.

**A LEADING GLOBAL
SAFETY TECHNOLOGY
& VIDEO TELEMATICS
PROVIDER.**



In a world where road accidents are commonplace, fleet operators are always looking at ways to reduce risk, increase safety, and protect their vehicles and investments.

Our vision and expertise of the commercial automotive industry has enabled us to develop cutting-edge products and technology with first class customer support and project management, helping vehicle owners and their drivers to reduce risk, increase safety, and protect vulnerable road users. We strive to add value and peace of mind to your business while developing long term customer relationships.

Experts in

- ▶ Automotive Technology Solutions
- ▶ Hardware, Software & Mechanical Engineering
- ▶ Harness Design & Development
- ▶ CAN-Bus Integration



**OVER 30
YEARS
EXPERIENCE**



**UK-BASED
TECHNICAL
SUPPORT TEAM**



**UK-BASED
PRODUCTION
FACILITIES**



**UK-BASED
DEVELOPMENT
CENTRE**



**DEDICATED
PROJECT
MANAGEMENT**



**RIGOROUS
QUALITY
MANAGEMENT**

INNOVATION THROUGH EXPERIENCE.

INDUSTRIES WE SUPPORT.

EchoMaster provides a full range of safety products and video telematics solutions to address the unique needs of the industries we serve. Our team are ready to partner with you to understand your specific business requirements and listen to your ideas.

We are proud to design, engineer and manufacture products and solutions tailored to your business. From conception to launch, quality and durability are key pillars of our development and manufacturing process.



AGRICULTURE



BUS & COACH



BLUE / YELLOW LIGHT



CONSTRUCTION



FREIGHT & HAULAGE



LEISURE



REFUSE & WASTE

ENGINEERING CAPABILITIES.

With decades of experience, our global engineering team includes mechanical, electrical, and software expertise to advance vehicles with proprietary technology right across the globe.

Specialising in premium, fully integrated products to deliver a factory-like experience in both commercial and passenger vehicles.



MECHANICAL

- ▶ CAN Bus Integration
- ▶ Harness Design & Development
- ▶ Part and Mold Design
- ▶ 3D CAD Design
- ▶ QA Testing
- ▶ OEM Integration



ELECTRICAL

- ▶ Vehicle Data Bus
- ▶ PCB Development
- ▶ Application Development
- ▶ Radio Head Unit Interfaces (GUI)
- ▶ Cloud Based Systems
- ▶ Large Virtual Systems



SOFTWARE

TESTING STANDARDS.

Every product goes through rigorous element, functional and real-world testing in our on-site testing facilities and through additional third-party testing locations.

From cameras, monitors, sensors and DVRs, all our commercial-grade solutions are designed and tested to achieve the highest possible quality standards for fit, finish and function.



DURABILITY TESTING



EMC TESTING



ENVIRONMENTAL TESTING



MECHANICAL TESTING

A COMMITMENT TO QUALITY.

Our global engineering team includes mechanical, electrical, and software expertise and advances vehicles with proprietary technology right across the globe.

Specialising in premium, fully integrated products to deliver a factory-like experience in both commercial and passenger vehicles.



CONTENTS.



KEY PRODUCTS & SOLUTIONS.

AI-Powered Solutions	10-11
EchoMaster Connected	12-13
FORS Accreditation	14
DVS Compliance	15
Partner Program	16-17
CAN-Bus Specialists	18-19

MOBILE DVR SOLUTIONS.

Multi-Channel DVRs	43-45
DVR / ADAS Add-ons	45
DVR Accessories	46-48
Un-Connected DVR Kit	49
Connected DVR Kit	49

CAMERAS.

Forward & Rear-Facing Cameras	21-22
Side-Facing Cameras	23
Driver-Facing Cameras	23
Blind Spot Cameras	24
Pedestrian Detection Cameras	25
Passenger Counter Camera	26
Brake Light Cameras	26-27
Dome Cameras	27
Camera & Monitor Kits	28
Camera Accessories	29-33

SENSORS & WARNING ALARMS.

Side-Alert Sensors	51
Multi-Frequency Alarms	51
Multi-Input Alarms	51
Night-Silent Alarms	52
Standard Reversing Alarms	52
Accessories	52
Lighting Solutions	53

DASH CAMS.

ADAS & Connected Dash Cams	35
Dash Cam Kits	36
Dash Cam Fitting Harnesses	37

FORS & DVS COMPLIANCE.

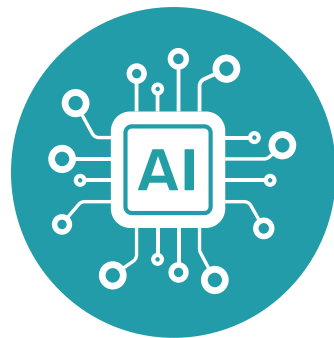
FORS Product Kits	55
DVS Compliant Solutions	56-57

MONITORS.

Dual-Input Monitors	39
Multi-Input Monitors	39
Mirror Monitors	40
Monitor Kits	41

HEAVY-DUTY AUDIO SOLUTIONS.

RM1800 RANGE	59
- Radio-Only	59
- Radio/Bluetooth	59
- Radio/Bluetooth/DAB/DAB+	60
RM2000 RANGE	61
- Radio-Only	61
- Radio/Bluetooth	61
- Radio/Bluetooth/DAB/DAB+	61



FEATURE-PACKED AI-POWERED VEHICLE SAFETY SOLUTIONS.

In an era driven by technology, EchoMaster is pushing the boundaries of automotive safety and efficiency with a range of innovative AI-powered solutions.

By seamlessly integrating artificial intelligence into a host of cutting-edge systems, EchoMaster are paving the way for a safer and more connected future on the roads.

By utilising advanced algorithms, our AI-solutions instantly analyse vehicle surroundings identify potential hazards and alert drivers to potential collisions or dangerous situations. Improved object recognition also enabling systems to accurately detect pedestrians, cyclists, and other vehicles, mean our solutions provide excellent results in both challenging weather conditions or low-light environments.

PEDESTRIAN DETECTION CAMERAS.



▶ GO TO
PAGE 25

ADVANCED DRIVER ASSISTANCE & MONITORING.



▶ GO TO
PAGE 35

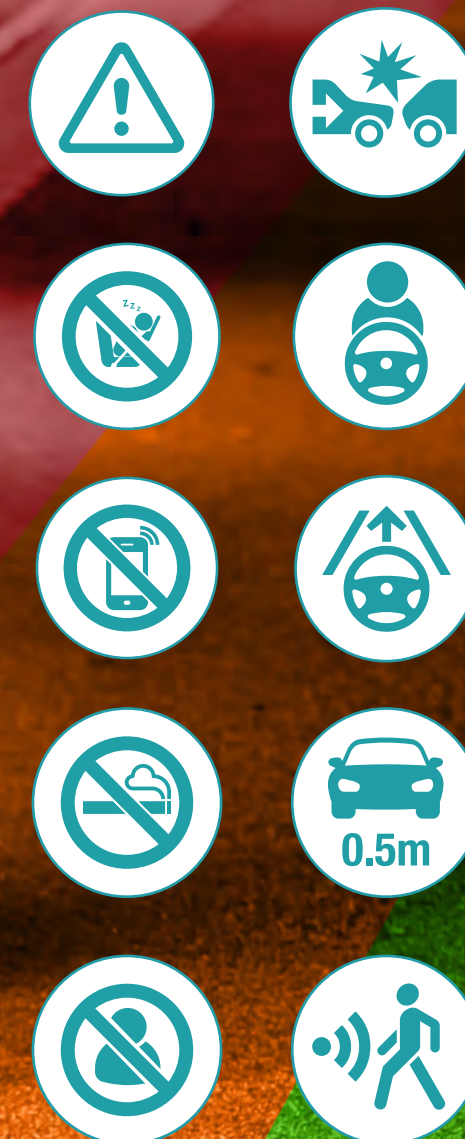
MOBILE DVR AI-POWERED ADD-ONS.



▶ GO TO
PAGE 45

ALARMS & WARNINGS PROVIDED

- ▶ Distance Detection
- ▶ Forward Collision
- ▶ Lane Departure
- ▶ Pedestrian Detection
- ▶ Phone Usage
- ▶ No Smoking
- ▶ Driver Distraction
- ▶ Driver Fatigue
- ▶ No Driver Warning



Helping to ensure the safety & security of your vehicles with our comprehensive cloud-based Fleet Management Solution.

By combining extensive industry knowledge with exceptional levels of service, support, and robust hardware we can provide your business with a bespoke solution designed to deliver significant benefits and cost reductions across your fleet, improving both safety and efficiency whilst also protecting your investment.

How our solution can benefit your business.



ENHANCED DUTY OF CARE



DRIVER TRAINING & REWARD



PROTECTS AGAINST FALSE CLAIMS



LOWERS OPERATIONAL RISK



INCREASED FLEET EFFICIENCY



DETERS THEFT & VANDALISM



INCREASES VEHICLE SAFETY



PROTECTS YOUR INVESTMENT

How it works.

Our intelligent Cloud-Based Fleet Management platform provides a complete solution for video telematics, tailored to work with any vehicle and securely connecting everything to the cloud as one system. Acting as your 'video witness' and accurately recording key video footage and analytics data for download for use as evidence or to improve efficiency across your fleet, the combination of our powerful platform and diverse product range makes EchoMaster Connected the perfect solution for vehicles in any industry.

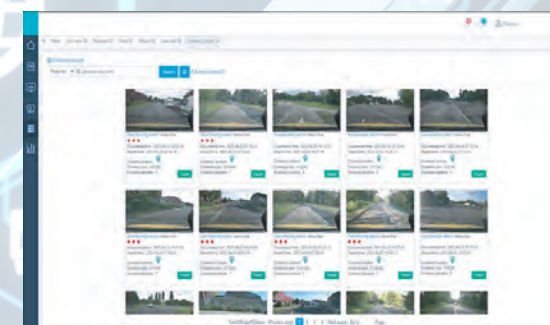


24/7 Access to your Fleet.

The Connected smart reporting suite allows you to analyse the GPS and video data captured from multiple cameras across your entire fleet. Instant alerts to incidents mean that you can act quickly. Triggers for harsh braking and dangerous driving can be set and recorded to help identify and train drivers saving expensive costs on vehicle maintenance.

Analyse your Fleet in Real-Time.

Gain a real-time insight into your fleet, live as it happens and see your problem areas as they occur. This allows you to act independently and modify your strategy as you go to ensure your fleet is working as quickly and efficiently as possible. The system also allows you to develop accurate, to the point reports to analyse and develop ongoing strategies to improve the performance of your fleet.

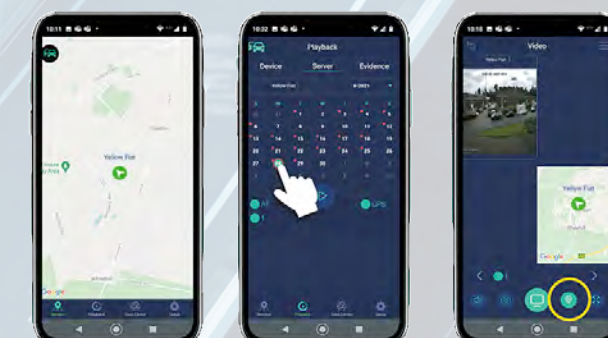


Receive Instant Notifications.

The combination of EchoMaster's high-quality hardware and Connected Smart Suite make sure that in the event of an accident or custom set alarm trigger you are notified as soon as possible. The system will also notify you if drivers are putting vehicles at risk through dangerous driving or driving whilst impaired.

Monitor your Fleet wherever you are.

Our Mobile App provides access to your entire fleet on the go meaning you will never miss an update. Providing an essential part of keeping you in touch with your fleet it also allows you to view reports, track individual drivers and even receive FNOL notifications.



COMPATIBLE & COMPLIANT.



EchoMaster safety products provide a complete and comprehensive range of innovative solutions to help achieve FORS accreditation and exceed exemplary levels of best practice in safety, efficiency, and environmental protection.

Together with FORS compliance, fleet operators within the construction industry who achieve FORS Silver accreditation also demonstrate full compliance with CLOCS: the Construction Logistics and Community Safety scheme. As a benchmark for safety, CLOCS aims to help operators become compliant across the entire supply chain which includes, but is not limited to, the implementation of safety solutions such as blind spot minimising, vehicle manoeuvring warnings and warning signage on all road-going vehicles for the benefit of all road users.

FRONT-FACING CAMERAS



MONITOR SOLUTIONS



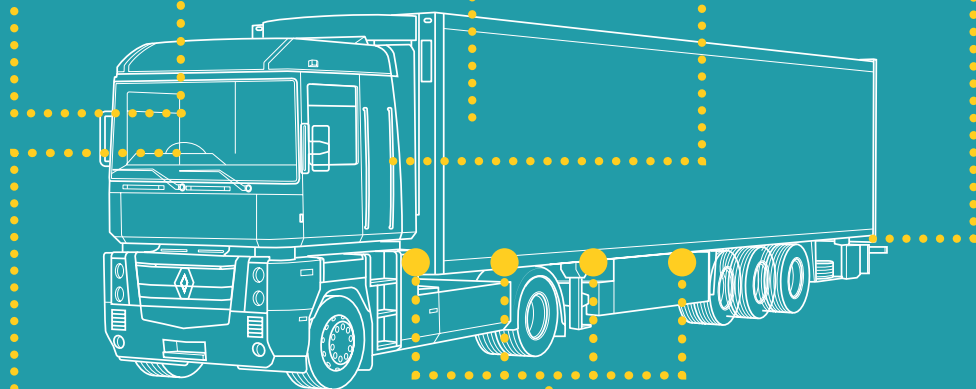
LEFT & RIGHT TURN ALARMS



SIDE-FACING CAMERAS



REAR-FACING CAMERAS



COMMERCIAL DVR SOLUTIONS



SIDE-ALERT SENSORS

DON'T FORGET...

From October 2024, all vehicles over 12 tonnes travelling into Greater London will now be required to achieve a minimum 3 star rating, an increase from the current 0 star rating currently required.

FOR MORE INFORMATION ON BOTH
FORS & DVS COMPLIANCE
GO TO PAGES 55-57



Scan
me

DIRECT VISION STANDARD

ACHIEVE DVS COMPLIANCE WITH ECHOMASTER.

Our range of comprehensive DVS compliant vehicle safety solutions help your fleet achieve the Direct Vision Standard. Our range includes better in-cab visibility with our multi-camera systems, blind-spot detection sensors, warning alarms and digital video recorders.



CONNECTED SOLUTIONS



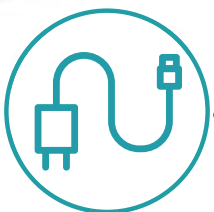
MONITOR SOLUTIONS



BLIND SPOT INFORMATION SYSTEM (BSIS)



MOVING-OFF INFORMATION SYSTEM (MOIS)



FITTING ACCESSORIES

BECOMING AN 'ECHOMASTER'.

with the EchoMaster Partner Program

As an EchoMaster Partner you will get to provide your clients best-in-class vehicle cameras, fleet risk management systems and driver safety solutions.

But more importantly we have done all the heavy lifting to make the pre-sales and after-sales process completely hassle-free, so you make more sales without the usual headaches of dealing with third-party aftermarket suppliers.

DESIGNED FOR YOUR BUSINESS.

Designed for commercial vehicle dealers, body builders and vehicle hire/leasing companies.

Capitalise on the benefits that EchoMaster delivers to your customers.

Not only do you make margin from the sale, but thanks to the onsite training provided to your team, you also make revenue from the installation of our hardware.

All this leads to improved customer satisfaction and loyalty, opening up opportunities for a broader relationship with your customers and extending the relationship beyond the point of sale.

WITH BENEFITS TO MATCH.

- ▶ Access to market-leading vehicle safety products and Fleet Management solutions
- ▶ Exclusive pricing & discounts
- ▶ On-site product & install training
- ▶ Complete technical support throughout the sales lifecycle
- ▶ Direct access to our UK support team by phone, email and real-time chat
- ▶ Sales and product documentation, guides and online videos
- ▶ Sales Support materials, brochures, leaflets, special promotions
- ▶ Access to new products before general release.

REQUIREMENTS.

The EchoMaster Partner Program is open to all commercial vehicle dealers, body builders and vehicle hire/leasing companies. The requirements are not extensive or overly complicated because the program is simple and flexible.

- ▶ Be a commercial vehicle dealer, body builder or leasing company.
- ▶ Have a team of vehicle install technicians available to be trained by us
- ▶ Achieve reasonable minimum sales
- ▶ Promote EchoMaster products within your showroom, vehicles, tradeshow and/or other relevant placements.
- ▶ The specifics of which will be agreed as part of the on boarding process.
- ▶ Agree to install the EchoMaster products and solution in a demonstrator vehicle.



PRODUCT TRAINING



MARKET-LEADING SOLUTIONS



EXCLUSIVE PRICING & DISCOUNTS



DEDICATED ACCOUNT MANAGER



SALES SUPPORT MATERIAL



TECHNICAL SUPPORT



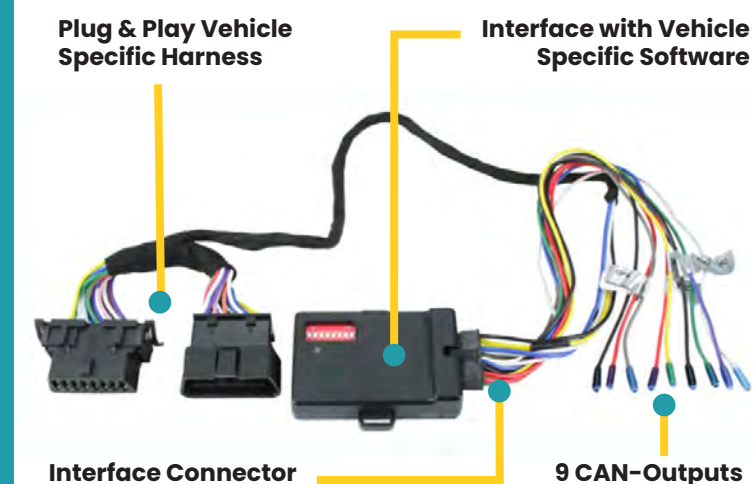
CAN-BUS INTEGRATION SPECIALISTS.

CANPRO is a powerhouse multi-output CAN Bus interface.

Our CANPRO CAN Bus interfaces are used in everything from cars, and commercial vehicles to boats, Powersports, ATV's and mobile machinery. Offering customers bespoke solutions to cover a variety of needs.

Our CANPRO interfaces have been developed by a team with over 25 years of experience designing and implementing CAN Bus applications.

We understand and have the experience to know what works and what doesn't, and we work closely with our global customer base to ensure that our CAN-based products are the best on the market.

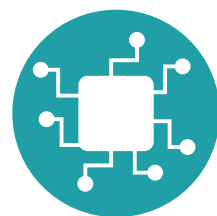


Core Output Signals

- ▶ Accessory Power Status
- ▶ Ignition Power Status
- ▶ Dash Illumination Status
- ▶ Reverse
- ▶ Left Turn Signal
- ▶ Right Turn Signal
- ▶ Park Brake Status
- ▶ Vehicle Speed (VSS)
- ▶ High Beam Status



**9 SWITCHABLE
OUTPUTS**



**ADD ACCESSORIES
TO CAN SYSTEM**



**8 HIGH / 1 LOW
LEVEL OUTPUT**

Why use a CANPRO CAN Bus interface?

- ▶ Our CANPRO Interfaces connect to the vehicle's CANBUS communications network and provide analogue signal outputs!
- ▶ CANPRO allows access vehicle information, status and triggers from the vehicle CANBUS for a wide range of aftermarket uses.
- ▶ Our CANPRO interfaces are designed to be configured to the customer's requirements. Software can be programmed and the interface pre-configured with a bespoke plug-and-play harness for simple installation.





Forward & Rear-Facing Cameras



Side-Facing Cameras



Driver-Facing Cameras



Blind Spot Cameras



Pedestrian Detection & Passenger Counter Cameras



Brake Light Cameras



Dome Cameras



Camera & Monitor Kits



Camera Accessories

FORWARD & REAR-FACING CAMERAS

CAM-FF01-FHD-P



Internal Forward-Facing Full HD 1080P Camera

- ▶ 1/2.8" CMOS Sensor
- ▶ Full 1080P Resolution
- ▶ Adjustable Lens
- ▶ 105 Degree Viewing Angle
- ▶ Operates at 0 LUX

CAM-FF01-P-AHD



External Forward-Facing Full HD 1080P Camera

- ▶ 720P AHD Image Sensor
- ▶ Full HD 1920 x 960 Resolution
- ▶ 115 Degree Viewing Angle
- ▶ IP67 Water/Debris-proof Rated
- ▶ Operates at 0.1 LUX
- ▶ 12V Operation

CAM-IPC-FF01



Internal Forward-Facing IPC Camera

- ▶ 1/2.8" 2M Pixel CMOS Sensor
- ▶ Full HD 1920 x 1080 Resolution
- ▶ Operates at 0.05 LUX
- ▶ Built-in Power Loss Protection
- ▶ Anti-Vibration Technology
- ▶ Anti-Glare Windscreen Moulding

CAM-FF03-P-FHD

Tamper-proof Forward-Facing Full HD 1080P Camera.



- ▶ Sony CMOS Sensor
- ▶ Operates at 0.05 LUX
- ▶ Internal/Windscreen Glass Mount
- ▶ Automatic Shutter
- ▶ GX-Aviation Type Connector
- ▶ Tamper-Proof Casing
- ▶ E-Marked

CAM-FLE-1

Rugged Low-Profile Fork-Lift Truck Camera

- ▶ 1/4" CMOS Lens
- ▶ 45 Degree Viewing Angle
- ▶ Night Vision Functionality (3m Distance)
- ▶ Rugged, Robust Metal Casing
- ▶ Operates at 0LUX
- ▶ E-Marked



CAM-IC-FHD-P

Image Correction Full HD 1080P Camera

- ▶ Ultra-Wide 170° Viewing Angle
- ▶ Full HD 1080p Resolution
- ▶ IP69K Water/Debris-Proof Rating
- ▶ Switchable Mirror/Normal View
- ▶ Night Vision Functionality (8-10m)
- ▶ E-Marked



CAM-IRF-FHD-P

Rear-Facing Full HD 1080p Camera with Built-in Microphone & Night Vision

- ▶ FHD 1080p Image Sensor
- ▶ 120 Degree Viewing Angle
- ▶ Operates down to 0.01 Lux
- ▶ IP69 Rated
- ▶ Built-In Microphone
- ▶ GX - Aviation Type Connector
- ▶ E-Marked



FORWARD & REAR-FACING CAMERAS - CONTINUED

CAM-IRF-P-AHD-A

Rear-Facing Full HD 1080P Camera with Microphone & Night-Vision



- ▶ 720p AHD CMOS Sensor
- ▶ 120 Degree Viewing Angle
- ▶ IP68 Rated
- ▶ Operates at 0.01 LUX
- ▶ 1000 TV Lines
- ▶ Built-in Microphone
- ▶ GX - Aviation Connector Type

CAM-NP1-FHD-P

Rear-Facing Full HD 1080P Number Plate Camera with Night-Vision



- ▶ 1080p High Definition
- ▶ 150 Degree Viewing Angle
- ▶ IP69K Rated
- ▶ Robust Metal Housing
- ▶ Night Vision (5m / 16.40ft)
- ▶ Built-in Audio
- ▶ Anti-Vibration Technology
- ▶ GX - Aviation Type Connector

CAM-IPC-IRF

Rear-Facing Commercial IPC Camera



- ▶ 1/4" CMOS Sensor
- ▶ 45 Degree Viewing Angle
- ▶ Operates at 0.01 LUX
- ▶ IP66 Rated



CAM-PD-REAR-140

Front/Rear Full HD 1080P AI-Powered Pedestrian Detection Camera

- ▶ 140 Degree Viewing Angle
- ▶ Up to 12m Detection Distance
- ▶ Configurable Detection Zones
- ▶ Optional Zone Overlay
- ▶ Updatable via USB
- ▶ Optional Wi-Fi Configuration
- ▶ Alarm Trigger
- ▶ IP69K Rated
- ▶ Calibration tool required for initial setup*



CAM-PD-REAR-52

Front/Rear Full HD 1080P AI-Powered Pedestrian Detection Camera

- ▶ 52 Degree Viewing Angle
- ▶ Up to 20m Detection Distance
- ▶ Configurable Detection Zones
- ▶ Optional Zone Overlay
- ▶ Updatable via USB
- ▶ Optional Wi-Fi Configuration
- ▶ Alarm Trigger
- ▶ IP69K Rated
- ▶ Calibration tool required for initial setup*

*USB-WIFI-AI & CAM-PD EXTENSION LEAD (SOLD SEPARATELY)

CAM-RM-FHD-P

Roof Mounted Full HD 1080P Camera with Night-Vision

- ▶ FHD 1080p Image Sensor
- ▶ Operates down to 0.01 Lux
- ▶ IP69 Water/Debris-proof Rated
- ▶ FHD 1080p Image Sensor
- ▶ Operates down to 0.01 Lux
- ▶ IP69 Water/Debris-proof Rated



SIDE-FACING CAMERAS

CAM-SM5A-P



Side-Facing Full HD 1080P Camera

- ▶ FHD 1080p Image Sensor
- ▶ 140° Viewing Angle
- ▶ IP69 Water/Debris-proof Rated
- ▶ Operates down to 0.01 LUX
- ▶ Built-In Microphone
- ▶ GX - Aviation Type Connector
- ▶ E-Marked

CAM-SM4A-P



Side-Facing 720P Camera

- ▶ AHD 720P Image Sensor
- ▶ 150 Degree Viewing Angle
- ▶ IP68 Water/Debris-proof Rated
- ▶ Operates at 0 LUX
- ▶ 1000 TV Lines
- ▶ Built-in Microphone

CAM-IPC-SM1



Side-Mount Metal IPC Camera

- ▶ 1/4" CMOS Sensor
- ▶ 720P Resolution
- ▶ 60 Degree Viewing Angle
- ▶ IP65 Water/Debris-proof Rated
- ▶ Operates at 0.1 LUX
- ▶ IP Connection to DVR
- ▶ GX - Aviation Type Connector

CAM-PD-SIDE

Side-Facing 1080P AI-Powered Pedestrian Detection Camera



- ▶ 52 Degree Viewing Angle
- ▶ Up to 20m Detection Distance
- ▶ Configurable Detection
- ▶ Optional Zone Overlay
- ▶ Updatable via USB
- ▶ Optional Wi-Fi Configuration
- ▶ Alarm Trigger
- ▶ IP69K Rated
- ▶ Calibration tool required for initial set up*

*USB-WIFI-AI & CAM-PD EXTENSION LEAD (SOLD SEPARATELY)

CAM-WM1-AHD-P

AHD Wing Mirror Mount Camera



- ▶ 1/3" CMOS Sensor
- ▶ 720P Resolution
- ▶ 90 Degree Viewing Angle
- ▶ Operates at 0 LUX
- ▶ IP67 Rated
- ▶ Electronic Shutter

CAM-MHD-FHD-170

Full HD 1080p Dome Camera



- ▶ 170 Degree Viewing Angle
- ▶ Switchable Normal/Mirror View
- ▶ IP69K Rated
- ▶ Built-in Microphone
- ▶ 12V Operation
- ▶ Rugged Casing
- ▶ GX - Aviation Type Connector

DRIVER-FACING CAMERAS

CAM-DF1-AHD-P

Internal Driver-Facing Full HD 1080p Camera

- ▶ 1/3" CMOS Sensor
- ▶ Full 720P Resolution
- ▶ 115 Degree Viewing Angle
- ▶ Operates at 0.05 LUX
- ▶ Built-in Audio



ALSO AVAILABLE AS IPC
DC-C26-CAM

BLIND SPOT CAMERA / MONITORS

DUAL CAMERA FEEDS

LCD/TFT DISPLAY WITH BUILT-IN AUDIO

LONG-RANGE SIDE CAMERA



LONG & SHORT BRACKETS

SHORT-RANGE BLINDSPOT CAMERA

Protecting against obstacles and vulnerable road users.

- ▶ Eliminates the blind spot around the A-pillar
- ▶ Supports WDR/HDR imaging technology
- ▶ 'Real-Time' Image synchronisation
- ▶ Automatic Ambient Light Adjustment
- ▶ Anti-Glare Night Vision Technology
- ▶ Waterproof & Dust-proof Casing
- ▶ Display with Audio
- ▶ SD Storage (up to 128GB)
- ▶ Supports Optional Third Camera
- ▶ Automatic Recording on Boot-up
- ▶ Supports Video Playback

CAM-MON-BS-LHS-KIT

Left-Hand Drive
Blind Spot Camera
Display



SHORT Bracket

CAM-MON-BS-LHL-KIT

Left-Hand Drive
Blind Spot Camera
Display



LONG Bracket

CAM-MON-BS-RHS-KIT

Right-Hand Drive
Blind Spot Camera
Display



SHORT Bracket

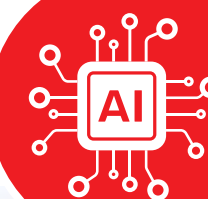
CAM-MON-BS-RHL-KIT

Right-Hand Drive
Blind Spot Camera
Display



LONG Bracket

PEDESTRIAN DETECTION CAMERAS



The feature-packed CAM-PD range offers Full HD 1080p resolution and utilises AI functionality in real-time to improve driving safety and detect potential risks of collision with pedestrians or cyclists up to 20m away.

The intelligent detection cameras can be installed on the side, rear or front of various vehicles such as Buses, Coaches, Trucks or Construction vehicles.

The CAM-PD range also comes with Anti-Vibration technology and IP69K Water/Debris proof rating to provide optimum performance even in the most adverse weather conditions.

The AI functionality can be calibrated using a Wi-Fi interface and the cameras built-in app as well being upgradeable by USB.

- ▶ Up to 140 Degree Viewing Angle
- ▶ Up to 20m Detection Distance
- ▶ Configurable Detection Zones
- ▶ Optional Zone Overlay
- ▶ Updateable via USB
- ▶ Optional Wi-Fi Configuration
- ▶ Alarm Trigger
- ▶ IP69K Rated
- ▶ Calibration tool required for setup*



52°
VIEWING
ANGLE



CAM-PD-SIDE
Side-Facing Full HD 1080P
Pedestrian Detection
Camera

52°
VIEWING
ANGLE



CAM-PD-REAR-52
Side-Facing Full HD 1080P
Pedestrian Detection
Camera

140°
VIEWING
ANGLE



CAM-PD-REAR-140
Side-Facing Full HD 1080P
Pedestrian Detection
Camera

USB-WIFI-AI Wi-Fi Module & EXT-CAM-PD 10 or 15m Extension Lead required for Installation and Initial Set-up
FOR FULL DETAILS - VISIT CAMERA ACCESSORIES SECTION PAGE 29

PASSENGER COUNTER CAMERA

Accurately record passenger numbers and transit patterns.

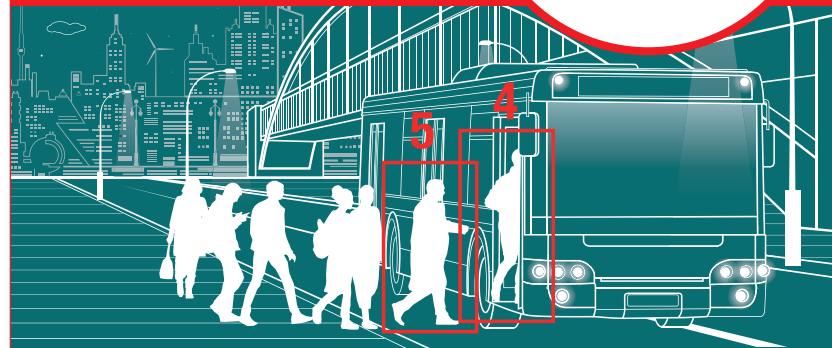


Enabling Fleet Managers to increase performance & efficiency across their fleets. By Accurately recording passenger numbers, transit patterns and behaviour, key info can be obtained & used for scheduling, forecasting and all service-related decisions.

The cross-checking of passenger numbers to fare transactions also assists in ensuring the correct revenue is obtained, and where required action is needed if not the case.

Key Features

- ▶ Accurately record Passenger Numbers & Transit Patterns
- ▶ Enables Cross Checking of Passengers against Fare Transactions
- ▶ Used as Standalone Unit or alongside EchoMaster Connected
- ▶ Increases Efficiency & Performance
- ▶ Remotely Updatable
- ▶ Mobile App available



BRAKE LIGHT CAMERAS

CAM-VW9-CO

Replacement OEM Brake Light Camera

- ▶ 1/4" CMOS Sensor
- ▶ 170 Degree Viewing Angle
- ▶ IP67 Water/Debris-proof Rated
- ▶ Operates at 0 LUX
- ▶ Parking Lines (Selectable)
- ▶ Mirrored Image



BRAKE LIGHT CAMERAS

CAM-SBL-2

Full HD 1080p Mercedes Sprinter Third Brake Light Camera



- ▶ Full HD 1080p Resolution
- ▶ Ultra-Wide 150° Viewing Angle
- ▶ IP68 Water/Debris-proof Rating
- ▶ Night Vision Functionality – 8 LEDs
- ▶ Operates at 0 LUX
- ▶ Easy Installation – Replaces OEM Brake Light. No drilling required

CAM-TBL-2

Full HD 1080p Ford Transit Custom Brake Light Camera



- ▶ Full HD 1080p Resolution
- ▶ Ultra-Wide 150° Viewing Angle
- ▶ IP68 Water/Debris-proof Rating
- ▶ Night Vision Functionality – 8 LEDs
- ▶ Operates 0 LUX
- ▶ Easy Installation – Replaces OEM Brake Light. No drilling required

CAM-VBL-2D

Full HD 1080p Mercedes Vito Brake Light Camera



- ▶ Ultra-Wide 150° Viewing Angle
- ▶ Full HD 1080p Resolution
- ▶ IP68 Water/Debris-proof Rating
- ▶ Night Vision Functionality – 8 LEDs
- ▶ Operates at 0 LUX
- ▶ Easy Installation – Replaces OEM Brake Light. No drilling required

CAM-MHD-FHD-170

Full HD 1080p Dome Camera



- ▶ Full HD 1080p Resolution
- ▶ 170 Degree Viewing Angle
- ▶ Switchable Normal/Mirror View
- ▶ IP69K Rated
- ▶ Built-in Microphone
- ▶ Operates at 0 LUX
- ▶ 12V Operation
- ▶ Rugged Casing
- ▶ GX – Aviation Type Connector

CAM-FDIR-AHD-P

AHD Dome Camera with Night Vision & Built-In Microphone



- ▶ 1/3" CMOS Sensor
- ▶ Operates at 0 LUX
- ▶ Adjustable Camera Direction (0-62 degrees)
- ▶ Selectable Mirror Image
- ▶ Adjustable Camera Direction
- ▶ Tamper-Proof Casing
- ▶ PAL Operation

CAM-IPC-FDIR-A-LT

720p IPC Dome Camera



- ▶ 720p AHD Resolution
- ▶ Night-Vision Functionality
- ▶ Tamper-proof Metal Casing
- ▶ Built-in Audio
- ▶ Operates at 0.01 LUX

CAMERA & MONITOR KITS

MCK-70
**7" TFT/LCD Monitor
& CCD Camera Kit**

The **MCK-70** Kit contains a high quality 7" TFT/LCD display monitor with 2 video inputs and an included controller. The kit also comes with a IP67 Night-vision camera with a 1/4" Sharp CCD lens and a 130 degree viewing angle.


Monitor Features

- ▶ 7" High Resolution display
- ▶ Dual Video Inputs
- ▶ Reverse trigger detect
- ▶ Dash Mount Fan Bracket
- ▶ Remote Control

Camera

- ▶ 1/4" CCD Sensor
- ▶ 120 Degree Viewing Angle
- ▶ IP67 Water/Debris-proof Rated
- ▶ Operates at 0 LUX
- ▶ 18 IR LEDs

MCK-70-AHD
**7" TFT/LCD Monitor
& AHD Camera Kit**

The **MCK-70-AHD** comprises of a 7" AHD Dash Mount monitor, a Commercial AHD camera with night vision and a 20m GXE Extension Lead. The MCK-70-AHD provides a High Resolution AHD image, 3 Video Inputs and 3 Trigger Wires to enable display switching when used with additional cameras (available separately).


Monitor Features

- ▶ 7" AHD High Resolution Image
- ▶ 3 x Video Inputs
- ▶ Supports AHD & Analogue
- ▶ 3 x Trigger Wires
- ▶ Optional Sunshade
- ▶ GX16 Connectors

Camera

- ▶ 1/4" CMOS AHD Sensor
- ▶ 720p Resolution Camera
- ▶ 120 Degree Viewing Angle
- ▶ IP68 Rated
- ▶ 1000 TV Lines
- ▶ Built-in Microphone
- ▶ Operates at 0.1 LUX
- ▶ Auto White Balance
- ▶ GX16 Connector

MCK-70-IP6M
**7" TFT/LCD Monitor &
IP69K CCD Commercial
Camera with Night Vision**

The **MCK-70-IP6M** comprises of a 7" AHD Dash Mount monitor, a Commercial AHD camera with night vision and a 20m GXE Extension Lead. The MCK-70-IP6M provides a High Resolution AHD image, 3 Video Inputs and 3 Trigger Wires to enable display switching when used with additional cameras (available separately).


Monitor Features

- ▶ 7" TFT/LCD Display
- ▶ 2 x Video Input
- ▶ Remote Control Included

Camera

- ▶ 1/4" CCD Sensor
- ▶ Operates at 0.5LUX
- ▶ IP69K Rated
- ▶ 120 Degree Viewing Angle
- ▶ 18 IR LEDs
- ▶ Mirror Image

Can't see what you are looking for?

All of our Full HD 1080p & AHD monitors are designed to work seamlessly together and providing endless possibilities.

Should you not see a suitable Camera & Monitor Kit that you require call our friendly sales team on **+44(0)1420 487110** or email **echomaster@aampglobal-eu.com** who will be able to help you find the right solution.



CAMERA ACCESSORIES

CAM-FDIR-AHD-SPC

Spacer for CAM-FDIR-AHD-P

Designed to be used with the **CAM-FDIR-AHD-P** to enable installation into more difficult areas or where clearance is required.

CAM-SM2-SPC25

**Spacer for CAM-SM4A-P
and CAM-SM2 Range**

Designed to be used with the **CAM-SM4A-P & CAM-SM2** to enable installation into more difficult areas or where clearance is required.

EXT-CAM-PD-5

**5m Extension Lead
for CAM-PD range**

The **EXT-CAM-PD-15** is a 5m extension for when you require the Buzzer/Trigger function for signalling when the customisable detection zones are triggered.

EXT-CAM-PD-10

**10m Extension Lead
for CAM-PD range**

The **EXT-CAM-PD-10** is a 10m extension for when you require the Buzzer/Trigger function for signalling when customisable detection zones are triggered.

EXT-CAM-PD-15

**15m Extension Lead
for CAM-PD range**

The **EXT-CAM-PD-15** is a 15m extension for when you require the Buzzer/Trigger function for signalling when customisable detection zones are triggered.

GXA-1

**Female GX16 Connector to
AV Camera Connection**

The **GXA-1** Adaptor Lead is a Female GX16 Connector to AV Camera Connection Adaptor used to connect old 'Veba' style cameras to monitors with GX16 connectors.

GXA-12

**Mercedes Benz 2 Camera
Interface Cable**

The **GXA-12** is a high-quality camera interface cable that is designed to allow the installation of up to 2 high-quality camera solutions to Mercedes Actros and Arocs trucks fitted with the J9P display option.

GXA-14

**Mercedes Benz 4 Camera
Interface Cable**

The **GXA-14** is a high-quality camera interface cable designed to allow the installation of up to 4 high-quality camera solutions to Mercedes Actros and Arocs trucks fitted with the J9P display option.

GXA-1M-2F

GX-Style Y-Lead

The **GXA-1M-2F** is a GX-Style Y-Lead (1 Male to 2 Female) adaptor that converts one camera input to two sources with isolated power. This allows a reverse camera to be powered from either DVR or Monitor without feedback.

CAMERA ACCESSORIES – CONTINUED

GXA-2


Female GX16 Connector to Screw-In AV Style Connector

Used to connect old style cameras to monitors with 'screw in' connectors.

GXA-3


Male GX16 Connector to Screw-In AV Style Connector

Used to connect newer cameras to older style monitors.

GXA-4


Male GX16 Connector to Push-In AV Style Connector

Used to connect newer cameras to monitors with push-in AV style connectors.

GXA-5


Male GX16 Connector to 6-Pin Mini Connector

Used to connect newer cameras to monitors with 6-Pin Connectors.

GXA-6


Female GX16 to Screw-In AV Style Connector

The **GXA-6** Adaptor Lead is a Female GX-16 Connector to Phono Connector (with Power)

GXA-7


Male GX16 Connector to Phono (with Power)

The **GXA-7** Adaptor Lead is a Male GX-16 Connector to Phono Connector (with Power)

GXE-1


GX16-4 Pin Extension Lead

The **GXE-1** is a 1m extension lead fitted with a 4-pin aviation type GX connector to allow the installer to extend the distance between the camera and monitor or DVR in an installation.

GXE-3


GX16-4 Pin Extension Lead

The **GXE-3** is a 3m extension lead fitted with a 4-pin aviation type GX connector to allow the installer to extend the distance between the camera and monitor or DVR in an installation.

GXE-6


GX16-4 Pin Extension Lead

The **GXE-6** is a 6m extension lead fitted with a 4-pin aviation type GX connector to allow the installer to extend the distance between the camera and monitor or DVR in an installation.

CAMERA ACCESSORIES – CONTINUED

IPCE-1M


GX16-6 Extension Lead for IPC Cameras – 1m

The **IPCE-1M** is a 20m GX-16 Style Extension Cable for use with Echomaster IPC Camera Products.

IPCE-3M


GX16-6 Extension Lead for IPC Cameras – 3m

The **IPCE-3M** is a 20m GX-16 Style Extension Cable for use with Echomaster IPC Camera Products.

IPCE-5M


GX16-6 Extension Lead for IPC Cameras – 5m

The **IPCE-5M** is a 20m GX-16 Style Extension Cable for use with Echomaster IPC Camera Products.

IPCE-20M


GX16-6 Extension Lead for IPC Cameras – 20m

The **IPCE-20M** is a 20m GX-16 Style Extension Cable for use with Echomaster IPC Camera Products.

MDA-JK-1


Micro-DIN to Jack Adaptor

The **MDA-JK-1** is a Micro-DIN to 3.5mm Jack Adaptor to connect compatible products to EchoMaster solutions.

MDE-10


Micro-DIN Extension Cable – 10m

The **MDE-10** is a 10m Extension Cable for use with Echomaster Cameras with Micro-DIN connectors

MDE-20


Micro-DIN Extension Cable – 10m

The **MDE-20** is a 10m Extension Cable for use with Echomaster Cameras with Micro-DIN connectors

USB-WIFI-AI


Wi-Fi Module for CAM-PD-SIDE

The USB-WIFI-AI is a Plug & Play Wi-Fi Module to enable the programming of the EchoMaster **CAM-PD-SIDE** Pedestrian Camera.

GXE-SZKIT-PF


GX16 Single Suzi Kit – Push Fit

The **GXE-SZKIT-PF** utilises 7 Pin Connectors that terminate to a Standard DVR Application 4-Pin Aviation Connector.

CAMERA ACCESSORIES – CONTINUED

SZ-PFK-IPC

**Colour-Coded
Coiled Cable
Extension Kit**



The **SZ-PFK-IPC** Extension Kit is designed for use with IP camera solutions and utilises Commercial Grade 7-Pin 24N connectors that terminate to a Standard DVR IPC 6-Pin Aviation Type Connector.

The SZ-PFK-IPC has colour coded sockets and flexible cable end to aid driver use.

VS41

**Video Camera
Switcher**



The **VS41** is an Universal 4 Camera Switcher that features four camera inputs (front, left and right side, and rear) and one video output for connecting to a factory or aftermarket radio with a video display.

The inputs are triggered by driver behaviour with the rear back-up inputs automatically activated when the vehicle is shifted into reverse and side inputs prompted by the turn signals. The VS41 is a perfect complement to the versatile universal mount back-up and side blind spot elimination cameras from EchoMaster.

VI-FORD-SYNC-3-PB

Ford Camera Interface Module



The **VI-FORD-SYNC-3-PB** is an innovative camera interface that allows the installation of 2 camera feeds or inputs such as a compatible DVR or 360 camera system where specific OE solutions are not fitted.

The camera inputs of the interface can be switched by utilising the external switch button supplied or the reverse signal of the vehicle. The LVDS connection to the display ensures a high-quality, picture with no shaking or loss of resolution when switching between the camera feeds.

VI-MB10.5NTG6

**Mercedes Benz Camera
Interface Module**



The **VI-MB10.5NTG6** is an innovative interface module that allows the installation of 2 cameras onto Actros, Arocs, & Sprinter platforms fitted with the standard OEM display.

The interface works automatically switching between the camera feeds and the home screen when not in use to allow the controls on the standard OEM to still be used.

DO YOU KNOW

HOW RESISTANT TO WATER & DEBRIS

YOUR VEHICLE SAFETY PRODUCTS ARE?



IP Ratings

– What do they mean & what do you need?

Here at EchoMaster we are determined to ensure you understand what solutions you purchasing for your fleet of vehicles. IP (Ingress Protection) ratings is an alpha-numeric system that determine the level of protection a particular product has when it comes the ingress of dirt and moisture.

What do the numbers mean

The **first number** refers to the rating given with regards to ingress of foreign objects (such as dirt & dust) and is graded from 1-6

- 0** Not Protected
- 1** No objects larger than 50mm
- 2** No objects larger than 12.5mm
- 3** No objects larger than 2.5mm
- 4** No objects larger than 1mm
- 5** Dust protected, not sealed
- 6** Dust tight, no ingress

The **second number** refers to the rating determines the amount of liquid ingress the product is protected against, it is rated between 0 and 9K.

- 0** Not Protected
- 1** Vertical Dripping Water
- 2** Dripping water when tilted up to 15 degrees
- 3** Water spray when tilted up to 60 degrees
- 4** Water splash
- 5** Water jet 6.3mm
- 6** Powerful water jet 12.5mm
- 7** Immersion in water up to 1m
- 8** Immersion beyond 1m
- 9K** Protection against High-Temp/Pressure Jet Sprays.

DO YOU KNOW

THE DIFFERENCE BETWEEN BOTH

PAL OR NTSC VIDEO FORMATS?



Firstly, many cameras today are compatible with both PAL and NTSC standards.

The NTSC (National Television Standards Committee) Standard is a format that is predominantly used in America, Japan and other areas, with the PAL (Phase Alternate Line) format common across Europe.

The biggest difference between both PAL or NTSC standard, is the method of colour transmission. PAL formats require TWO decoders whilst NTSC only needs ONE. This makes NTSC less effective when displaying colour, but more energy efficient when it comes to power usage. However, the unique advantage of PAL is that these cameras can usually be set to NTSC as well.

So, when choosing the right format for your requirements will entirely depend on your preference and geographical location and the format of the other equipment you will be using alongside your cameras.



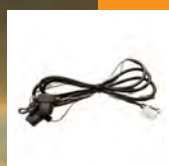
ADAS & Connected Dash Cams



Dash Cam Kits



THINKWARE™ Dash Cams



Dash Cam Fitting Harnesses

CONNECTED & ADAS DASH CAMS

DC-633-AI

Connected Dash Cam with ADAS Functionality

The powerful AI-functionality of the **DC-633-AI** enables the front-facing 1080p camera to capture video evidence of the road ahead providing both real-time and remote warnings including forward collision, lane departure, and pedestrian detection.

The internal driver-facing camera provides remote feedback on driver distraction, fatigue, phone usage, and smoking.

- ▶ High Definition (1080P & 720P) Recording
- ▶ Built-in G-Sensor
- ▶ GPS/GLONASS Functionality
- ▶ 4G Functionality
- ▶ Evidence Reporting
- ▶ SD Card Storage (up to 256GB) – sold separately
- ▶ Rugged Aluminium Casing with Heat Sink for Optimum Heat Dissipation



[WATCH VIDEO](#)



Connect your Dash Cam to our Innovative Cloud-Based Video Telematics Platform, EchoMaster Connected, and gain a whole host of extra features and functionality to keep you in control of your fleet.

- ▶ Custom 'Max' Speed Alarm
- ▶ Harsh Braking Alarm
- ▶ Harsh Left/Right Turn Alarm
- ▶ Video-Loss Alarm
- ▶ G-Shock (Crash Detection)
- ▶ Harsh Acceleration Alarm
- ▶ Geo-Fencing
- ▶ Custom Alarm Triggers

DC-6LTS-SC

Full HD 1080P Single Forward-Facing Dash Cam

DESIGNED TO WORK WITH OUR DASH-MOUNT MONITORS SEE PAGE 39



1080P FULL HD

- ▶ 143 Degree Front Camera
- ▶ Option to add a 2nd AHD camera
- ▶ 2-Way Audio Communication
- ▶ Built-in 6-Axis G Sensor
- ▶ Built-in Echo & Noise Cancelling
- ▶ Wi-Fi, 4G & GPS Functionality
- ▶ Dual SD Card Storage
- ▶ Sleep Mode & Remote Turn-On



2-WAY COMMS



BUILT-IN G-SENSOR



BUILT-IN WI-FI



4G



DUAL SD CARDS (256GB)



NOISE CANCELLING TECH



WIDE VIEWING ANGLES



GPS

DC-6LT-DC

Dual HD 1080P Single Forward-Facing Dash Cam

DESIGNED TO WORK WITH OUR DASH-MOUNT MONITORS SEE PAGE 39



1080P FULL HD

- ▶ 143 Degree Front Camera
- ▶ 2-Way Audio Communication
- ▶ Built-in 6-Axis G Sensor
- ▶ Built-in Echo & Noise Cancelling
- ▶ Wi-Fi, 4G & GPS Functionality
- ▶ Dual SD Card Storage
- ▶ Sleep Mode & Remote Turn-On

DC-6ADS-AI

Full HD 1080P Single Forward-Facing ADAS Dash Cam

DESIGNED TO WORK WITH OUR DASH-MOUNT MONITORS SEE PAGE 39



1080P FULL HD

- ▶ Wide 140 Degree Viewing Angle
- ▶ Built-in AI-powered ADAS Functionality includes Lane Departure, Distance Detection & Forward Collision Warning
- ▶ Optional Driver-Facing DMS Camera provides warnings for Phone Usage, Smoking, Driver Fatigue and Distraction
- ▶ 2-Way Audio Communication
- ▶ Built-in 6-Axis G Sensor
- ▶ Built-in Echo & Noise Cancelling
- ▶ Wi-Fi, 4G & GPS Functionality
- ▶ Dual SD Card Storage
- ▶ Sleep Mode & Remote Turn-On
- ▶ Quick and Easy Installation



DASH CAM KITS

DC-6LTS-SC-ER

**Full HD 1080p
Connected Dash Cam &
Rear-Facing Camera Kit**

The **DC-6LTS-SC-ER** Full HD 1080p Dash Cam and Rear-Facing Camera offer a comprehensive safety solution in almost any vehicle.



Kit parts:

1 x DC-6LTS-SC
1 x CAM-IRF-P-AHD-A
1 x GXE-20

**1080P
FULL HD**

DC-6LTS-SC-ES

**Full HD 1080p
Connected Dash Cam &
Side-Facing Camera Kit**

The **DC-6LTS-SC-ES** Full HD 1080p Dash Cam and Side-Facing Camera offer a comprehensive safety solution in almost any vehicle.



Kit parts:

1 x DC-6LTS-SC
1 x CAM-SM4A
1 x GXE-6

**1080P
FULL HD**

DC-6LTS-SC-ED

**Full HD 1080p
Connected Dash Cam &
Dome Camera Kit**

The **DC-6LTS-SC-ED** Full HD 1080p Dash Cam and Rear-Facing Camera offer a comprehensive safety solution in almost any vehicle.



Kit parts:

1 x DC-6LTS-SC
1 x CAM-MHD-FHD-170
1 x GXE-6

**1080P
FULL HD**

DC-6LTS-SC-DF

**Full HD 1080p
Connected Dash Cam &
Driver-Facing Camera Kit**

The **DC-6LTS-SC-DF** Full HD 1080p Dash Cam and Side-Facing Camera offer a comprehensive safety solution in almost any vehicle.



Kit parts:

1 x DC-6LTS-SC
1 x CAM-DF1-AHD-P
1 x GXE-3

**1080P
FULL HD**

DASH CAM FITTING HARNESSES

Our Bespoke Dash Cam Harness are designed to enable the pick up of B+, IGN and Ground, in an easy format within the chassis manufactures approved locations, meaning that if other equipment is already fitted you do not need to rewire or de-pin any existing wiring it is all plug and play.

HAR-NET-ACTROS

**Mercedes Actros
Dash Cam Fitting Harness**

COMPATIBLE WITH:
Mercedes Actros 5



HAR-NET-IVSWAY

**Iveco Dash Cam
Fitting Harness**

COMPATIBLE WITH:
Iveco S-Way Vehicles



HAR-NET-MAN-TGX

**MAN Truck Dash Cam
Fitting Harness**

COMPATIBLE WITH:
MAN TGX Vehicles



HAR-NET-SPRINT

**Mercedes Sprinter Dash Cam
Fitting Harness**

COMPATIBLE WITH:
Mercedes Sprinter 907 Vehicles



HAR-NET-TRAN

Ford Dash Cam Fitting Harness

COMPATIBLE WITH:
Ford Transit 2020 > Vehicles

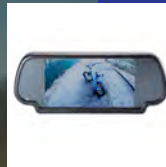




Dual-Input Monitors



Multi-Input Monitors



Mirror Monitors



Monitor Kits



DUAL-INPUT MONITORS

MON-70

**7.0" Dash Mount
Dual Input
Monitor**



- ▶ 7" High resolution display
- ▶ Dual Video Inputs
- ▶ Reverse trigger detect
- ▶ Dash Mount Fan Bracket included
- ▶ Remote Control

MON-7022-69-AHD

**7" Waterproof
IP69K Dual-Input
Monitor**



- ▶ 7" AHD High-Resolution Display
- ▶ IP69K Water/Debris-proof Rating
- ▶ Supports Analogue & 1080p Formats
- ▶ Built-in Sun/Splash Shield
- ▶ 2 x Video Inputs
- ▶ 1 x Trigger Input
- ▶ GX Aviation Type Connector

MULTI-INPUT MONITORS

MON-7033-AHD-FB

**7" IP69K Waterproof AHD Dash
Mount Monitor with Lockable Buttons**



- ▶ 7" AHD High-Resolution Display
- ▶ Supports Analogue & 1080p
- ▶ Built-in Sun/Splash Shield
- ▶ IP69K Rated
- ▶ 2 x Video Inputs
- ▶ 1 x Trigger Input
- ▶ GX Aviation Type Connector

MON-7033-69-LB

**7" IP69K Waterproof
AHD Dash Mount Monitor
with Lockable Buttons**



- ▶ Full 1080p Resolution
- ▶ Supports Analogue & 1080p
- ▶ IP69K Rated
- ▶ Lockable Buttons
- ▶ E-Mark Certification

**ALL OUR 720P & 1080P CAMERAS ARE COMPATIBLE WITH THE ABOVE MONITORS
TO PROVIDE A MULTITUDE OF OPTIONS.**

MULTI-INPUT MONITORS – CONTINUED

MON-7044-69

7" Dash Mount Quad Input Water Resistant Monitor

The MON-7044-69 is a dash mount 7" Quad-input monitor designed for rugged commercial applications.

Designed to resist water damage, the MON-7044-69 is ideal for vehicles used in uncertain outdoor conditions, where many consumer-grade monitors and cameras just won't be suitable.

- ▶ 7" High Res TFT/LCD Display
- ▶ Quad Video Inputs
- ▶ 4 x Trigger Wires
- ▶ Multiple Split Screen Options
- ▶ IP69 Rated
- ▶ GX16 Connector



MIRROR MONITORS

MM-70-CL-AHD

7" Clip-On AHD Mirror Monitor

The **MM-70-CL-AHD** is a 7" AHD Mirror Monitor that attaches to your existing rearview mirror.

The MM-70-CL-AHD will operate as normal until an AV signal is received through one of the dual video inputs when the 7" display section becomes a high-resolution widescreen (16:9) monitor.

- ▶ 7.0" Display
- ▶ Dual video inputs
- ▶ Reverse signal trigger
- ▶ Universal Clip-on fitting
- ▶ Dual mono audio inputs
- ▶ Remote control included



MONITOR KITS

MCK-7-WIFI-MAG

720P Wireless Magnetic Camera & 7" Dash Mount Digital Monitor Kit

Increase Safety & Improve Visibility when installation is difficult or where hard-wired solutions are not possible with the MCK-7-WIFI-MAG, High Definition (720p) Wireless Magnetic Camera & 7" Dash Mount Digital Monitor Kit.

The robust IP67 rated camera comes with an adjustable viewing angle and ultra-strong magnetic adhesion making it ideal for a number of different applications including forklifts, reach stackers and other large construction and agricultural machinery.

- ▶ 720p Resolution
- ▶ Ultra-Strong Magnetic Adhesion
- ▶ Built-in Rechargeable Battery
- ▶ Night-Vision Functionality
- ▶ Transmission Distance (up to 200m)
- ▶ 720p Resolution



MM-88-CAM

Full Display AHD Mirror Monitor & 1080p Rear-View Camera Kit

The **MM-88-AHD-KIT** is a high-quality AHD Full Display Mirror Monitor and rear-view camera kit suitable for a number of different applications.

The titanium oxide coated mirror monitor has a robust plastic moulded casing and comes with anti-glare glass ensuring crystal viewing even in the brightest of weather conditions.

The 1080p Camera comes with a CMOS Image Sensor and 130 degree viewing angle.





Multi-Channel DVRs



DVR / ADAS Add-On



DVR Accessories



MULTI-CHANNEL DVRs

FOR QUICK
& EASY INSTALL OF ALL
OUR MOBILE DVRs CHOOSE
OUR EASYCHECK VIEWER
TOOL - SEE PAGE 47

DVR-50-N-4GG

5-Channel Mobile DVR with AI-functionality with 4G & Wi-Fi

The **DVR-50-N-4GG** is a high-performance Mobile DVR that boasts 4 AHD camera channels and 1 IPC. Powerful AI-functionality also provides driver warnings including Driver Fatigue, Distraction, Mobile Phone Usage and Smoking warnings. It also comes complete with built-in GPS features, 4G connectivity and trigger output to allow easy integration with telematics devices and can support up to 256GB SD card storage.

- ▶ 4 x AHD Channels + 1 x IPC
- ▶ 2 x SD Card slots (256GB)
- ▶ Integrated GPS & 4G Connectivity
- ▶ 12-24V Compatible (8-36V input)
- ▶ Compatible with Touch Panel
- ▶ AI-functionality
- ▶ Lockable Storage Case
- ▶ 6-Axis G-Shock Sensor

COMPATIBLE
WITH OUR NEW
MOIS & BSIS
SYSTEMS
SEE PAGE 57



DVR-50-FHD-WG

5-Channel Mobile DVR with AI-functionality with GPS & Wi-Fi

The **DVR-50-FHD-WG** is a high-performance Mobile DVR boasting 4 AHD camera input channels as well as 1 IPC channel. Complete with built-in GPS features, Wi-Fi connectivity and trigger output to allow easy integration with telematics devices, it can support up to 256GB SD card storage

- ▶ 4 AHD Channels + 1 IPC channel
- ▶ 2 x SD card slots (Up to 256GB)
- ▶ Lockable Storage case
- ▶ 3-Axis G-Shock sensor
- ▶ Integrated GPS & 4G connectivity
- ▶ Compatible with Touch Panel
- ▶ 12V-24V compatible (8V-36V input)
- ▶ Additional Trigger in and outputs



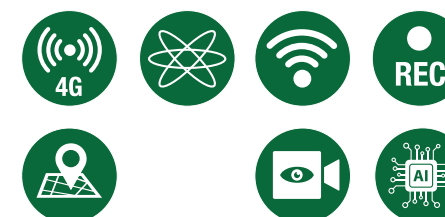
DVR-150-N-4GG

5-Channel Mobile DVR with HDD Storage, GPS & 4G Connectivity

A high-performance Mobile Digital Video Recorder, boasting 4 AHD channels and 1 IPC channel. The **DVR-150-N-4GG** provides ADAS Blind Spot Detection and Driver Status Monitor (DSM). Complete with built-in 4G connectivity and GPS functionality, it also features a 2TB Hard Disk Drive (HDD) storage and external trigger output.

- ▶ 4 x AHD Channels + 1 x IPC Channel
- ▶ Full HD 1080p Resolution
- ▶ Upto 1TB HDD Storage
- ▶ Lockable Case to protect your data
- ▶ Integrated GPS
- ▶ Built-in 6-Axis G-Sensor
- ▶ 12-24V (8-36V input)
- ▶ Additional Trigger in and outputs

COMPATIBLE
WITH OUR NEW
MOIS & BSIS
SYSTEMS
SEE PAGE 57



MULTI-CHANNEL DVRs – CONTINUED

DVR-150-FHD-G

5-Channel Mobile DVR
with HDD Storage & GPS

- ▶ Full HD 1080P/720P/DI resolution
- ▶ 4 AHD + 1 IPC channel
- ▶ Supports Up to 2TB Hard Disk Drive (HDD)
- ▶ Lockable Storage case (to protect data)
- ▶ Integrated GPS connectivity
- ▶ Remote Wake-Up functionality
- ▶ Built-in 3-Axis G-Shock sensor
- ▶ 12V-24V compatible (8V-36V input)
- ▶ Additional Trigger in and outputs



DVR-150-FHD-WG

5-Channel Mobile DVR
with HDD Storage, GPS
& Wi-Fi

- ▶ Full HD 1080P/720P/DI resolution
- ▶ 4 AHD Channels + 1 IPC channel
- ▶ Up to 1TB Hard Disk Drive (HDD) – sold separately
- ▶ Lockable Storage case (to protect data)
- ▶ Integrated GPS connectivity
- ▶ Remote Wake-Up functionality
- ▶ Built-in 3-Axis G-Shock sensor
- ▶ 12V-24V compatible (8V-36V input)
- ▶ Additional Trigger in and outputs allow for integration with telematics devices



DVR-344-N-4GG

8-Channel Mobile DVR
with HDD Storage, GPS
& Wi-Fi

- ▶ Full HD 1080P/720P/DI Resolution
- ▶ 4 AHD Channels + 4 IPC Channels*
- ▶ Supports up to 2TB Hard Disk Drive & 256GB SD Card Storage
- ▶ Lockable Storage Case (to protect data)
- ▶ Integrated GPS & 4G Connectivity
- ▶ Remote Wake-Up Functionality
- ▶ Built-in 6-Axis G-Shock Sensor
- ▶ 12V-24V compatible (8V-36V input)
- ▶ Additional Trigger in and outputs allow for integration with telematics devices



COMPATIBLE
WITH OUR NEW
MOIS & BSIS
SYSTEMS
SEE PAGE 57



MULTI-CHANNEL DVRs – CONTINUED

DVR-580-4GG

12-Channel Mobile DVR with
HDD Storage, GPS & 4G Functionality

- ▶ Full HD 1080P/720P/DI resolution
- ▶ 8 AHD Channels + 4 IPC channels*
- ▶ Supports up to 2TB HDD & 256GB SD card storage
- ▶ Lockable Storage case (to protect data)
- ▶ Integrated GPS & 4G connectivity
- ▶ Remote Wake-Up functionality
- ▶ Built-in G-Shock sensor
- ▶ 12V-24V compatible (2V-26V input)
- ▶ Additional Trigger in and outputs



*IPC-PON-4 Switch required

DVR / ADAS ADD-ONS

DVR-DAD-KIT

DMS & Advanced Driver
Assistance (ADAS) Kit

The **DVR-DAD-KIT** is a comprehensive status warning solution designed to monitor complex road situations and driver behaviour in the cabin to help prevent accidents up ahead.



- ▶ 1080p Front-Facing ADAS Camera
- ▶ Driver Facial-Analysis Camera
- ▶ Dedicated display alerts the driver of a potential hazard
- ▶ Improves safety for your drivers and reduces the risk of costly incidents
- ▶ Can be used with an EchoMaster Connected system to create a secure, closed-loop for data gathered by the kit and access your data remotely from your devices
- ▶ Provides a range of warnings for the driver and operator including Fatigue, Distraction, Lane Departure, Forward Collision, Distance Monitoring & more.
- ▶ Designed for use with EchoMaster FHD 1080p DVR range

DVR-RW-AI-DASH

R-Watch Display
for DVR-DAD-KIT

The **DVR-RW-AI-DASH** R-Watch Display is a dedicated display designed to be used with the DVR-DAD-KIT and alerts the driver whenever the system detects a potential hazard.



Want an easier way to compare
all DVR solutions?



TURN OVER FOR OUR COMPREHENSIVE RANGE OF DVR ACCESSORIES >>

DVR ACCESSORIES

DVR-50-TH-CAB

DVR Trigger Harness for
DVR-50 & DVR-150 range

The **DVR-50-TH-CAB** is a Multi-Pin Trigger Harness with bare ends that connects Trigger Inputs and Outputs to DVR-50 and DVR-150 ranges.



DVR-150-HCAD

Heated HDD Caddy
for DVR-150 range

The **DVR-150-HCAD** is a Heated Caddy for use with the DVR-150 range of Mobile DVR solutions. It is designed to allow the Hard Drive (sold separately) to be kept within its optimum working temperature range to ensure no loss of data even in the harshest of weather conditions.



DVR-350-HCAD

HDD Caddy Reader
for DVR-350 range

The **DVR-350-HCAD** is a Heated Caddy for use with the DVR-350 Mobile DVR. It is designed to allow the Hard Drive (sold separately) to be kept within its optimum working temperature range to ensure no loss of data even in the harshest of weather conditions.



DVR-580-HCAD

HDD Caddy Reader
for DVR-580 range

The **DVR-580-HCAD** is a Heated Caddy for use with the DVR-580 Mobile DVR. It is designed to allow the Hard Drive (sold separately) to be kept within its optimum working temperature range to ensure no loss of data even in the harshest of weather conditions.



DVR-150-READ

Caddy Reader
for DVR-150
range


The **DVR-150-READ** is used to transfer video files from either DVR-150 or DVR-350 devices directly to your PC using the EchoMaster Connected Viewer software.

- Powers HDD directly from USB ports
- Additional power input (if required)
- Status LED's
- USB 3.0

DVR-350-SR-CAB

DVR Serial Cable
for DVR-350 range

The **DVR-350-SR-CAB** Adapter Cable with bare ends allows serial data connections to the DVR-350 Mobile DVR.



DVR ACCESSORIES – CONTINUED

DVR-350-TH-CAB

DVR Trigger Harness for DVR-350 range

- 8 x Configurable Trigger Inputs for External Inputs
- 2 x Configurable Alarm Outputs
- Speed Pulse Output
- 1 x 12V Output



DVR-580-TH-CAB

DVR Trigger Harness for DVR-580 range

The **DVR-580-TH-CAB** is a DVR trigger harness for use on the DVR-580 range.

It features 8 configurable trigger inputs for external inputs, 2 configurable alarm outputs, speed pulse inputs, 12v and 5v outputs, RS232 inputs and RS485 inputs.



DVR-APPCHK

EasyCheck Viewer Tool

- Wi-Fi Connection
- Plug & Play
- SD Card Slot
- Video File Backup to SD card
- Device status checking
- Real-Time Preview Available
- Easy Device Firmware Updating



DVR-VOA-1004

GX16-4 to 10 Pin
Adaptor Lead

The **DVR-VOA-1004** is a GX16 to 10 pin Adapter Lead designed for use with the DVR-350/380/580 Mobile DVR range where connection to monitor with a standard 4-pin aviation type connector is required.



DVR-VOA-2

GX16 4 Pin
to GX16 4 Pin
Monitor Adaptor

The **DVR-VOA-2** is a GX16 Adapter Lead designed to connect a monitor with a standard 4-pin aviation type connector to any product in the DVR-50/150 Mobile DVR range.



DVR-WPENC-KIT-150

Waterproof Fitting
Enclosure for
DVR-150 range

The **DVR-WPENC-KIT-150** is a rugged, waterproof DVR Fitting Enclosure designed to eliminate the ingress of dirt, dust and moisture and protect your DVR where external installation means the system would be exposed to the elements. The case also comes pre-terminated for plug & play installation with the DVR-150 range.

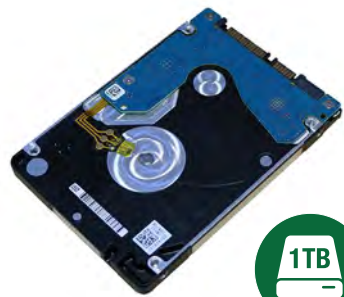


DVR ACCESSORIES – CONTINUED

HDD-TOSH-1TB

DVR Serial Cable
for DVR-350 range

The **HDD-TOSH-1TB** is a 2.5" SATA 1 TB Hard Disk Drive (HDD), optimised for mobile solutions incorporating Toshiba Dynamic Cache Technology to enhance access performance.



- ▶ 1TB Storage
- ▶ Built-in Shock Sensor
- ▶ 128MB Buffer
- ▶ Weight: 117g
- ▶ Operating Temperature -40°C~+65°C

HDD-TOSH-2TB

DVR Trigger Harness
for DVR-350 range

The **HDD-TOSH-2TB** is a 2.5" SATA 1 TB Hard Disk Drive (HDD), optimised for mobile solutions incorporating Toshiba Dynamic Cache Technology to enhance access performance.



- ▶ 1TB Storage
- ▶ Built-in Shock Sensor
- ▶ 128MB Buffer
- ▶ Weight: 117g
- ▶ Operating Temperature -40°C~+65°C

SD-256

Standard-Size Class 10
256GB SD-Card

The **SD-256** is a Standard size Class 10 SD Card for use with Echomaster Dashcams or DVR systems.



- ▶ For industry-standard professional applications (4K and 8K resolution)
- ▶ UHS-II video speed class (V90)
- ▶ 256GB Capacity
- ▶ 300MB/s read, 260MB/s write

NON-CONNECTED DVR KIT

DVR-5CH-HDD-TH-UC

Non-Connected 1TB
Digital Video Recorder Kit

The **DVR-5CH-HDD-TH-UC** makes installation quick and easy providing all the requirements parts in one box.

The Kit consists of High-Performance 5 Channel DVR with Built-in G-Sensor, Tamper-proof casing & GPS functionality. It is also supplied with a 1TB Hard Disk Drive (HDD) and DVR Trigger Harness.

KIT CONTENTS

- ▶ DVR-150-FHD-G
- ▶ DVR-50-TH-CAB
- ▶ HDD-TOSH-1TB

ALSO AVAILABLE WITH A 2TB HARD DRIVE
DVR-5CH-HDD-TH-UC-2



CONNECTED DVR KIT

DVR-5CH-HDD-TH-C

Connected 1TB
Digital Video Recorder Kit

The **DVR-5CH-HDD-TH-C** makes installation quick and easy providing all the requirements parts in one box.

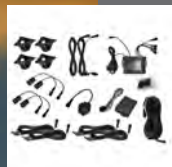
The Kit consists of High-Performance 5 Channel DVR with Built-in G-Sensor, Tamper-proof casing, 4G & GPS functionality. It is also supplied with a 1TB Hard Disk Drive (HDD) and DVR Trigger Harness.

KIT CONTENTS

- ▶ DVR-150-N-4GG
- ▶ DVR-50-TH-CAB
- ▶ HDD-TOSH-1TB

ALSO AVAILABLE WITH A 2TB HARD DRIVE
DVR-5CH-HDD-TH-C-2





Side-Alert Sensors



Multi-Frequency Reversing Alarm



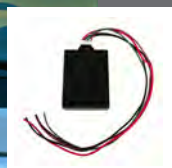
Multi-Input Reversing Alarm



Night-Silent Alarm



Standard Reversing Alarm



Accessories



Lighting Solutions

SIDE ALERT SENSORS

SA-IP69-SPM

IP69K Side Alert Kit with Speed Pulse Trigger for Commercial Vehicles

The system consists of 4 x IP69K Water/Debris-Proof High Sensitivity Sensors that can be flush mounted or underslung when used with the brackets provided, along with an IP69K System Control Box. The SA-IP69-SPM also comes with a Speed Pulse & Indicator Trigger Module which activates the sensors when the vehicle is at low speed.

- ▶ Dip Switch Settings for Detection Zone
- ▶ Distance and Warning Adjustment
- ▶ Audible & Visual Warning
- ▶ OE Sounding Buzzer
- ▶ Daisy Chained High Sensitivity IP69K Sensors
- ▶ Wide Detection Angle with Minimal Blind Spot Area
- ▶ Triangulation Technology



MULTI-FREQUENCY REVERSING ALARMS

WNA-1-EM

Multi-Frequency Reversing Alarm

The **WNA-1-EM** is a versatile Multi-Frequency Reversing Alarm that eliminates nuisance noise by providing greater directional information than that of a traditional alarm.

- ▶ Multi-Frequency Broadband Sound
- ▶ Instantly Locatable Sound
- ▶ IP68 Water/Debris-proof Rating
- ▶ Eliminates Noise Nuisance
- ▶ Sound confined to danger area
- ▶ Clear Audible Warning



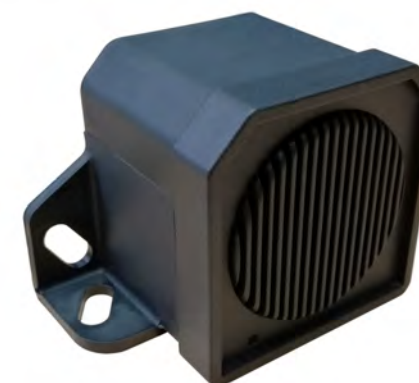
MULTI-INPUT REVERSING ALARM

MMA-1

Multi-Input Warning Alarm

The **MMA-1** is a Robust Multi-Input Safety Warning Alarm providing external warnings when the vehicle is manoeuvring. The alarm has inputs for left and right turn (spoken warnings) and for either a spoken or beeping reversing alarm along with an IP68 Water/Debris-proof Rating.

- ▶ Fully Automatic no activation required.
- ▶ Multi-Inputs – One Unit Covers All
- ▶ IP68 Water/Debris-proof Rating
- ▶ 97dB +/- 4dB at 4ft
- ▶ 12/24V Compatible
- ▶ Clear Audible Warnings
- ▶ Night Time Mute Capability



DOUBLE ENGAGE NIGHT SILENT ALARM

RA-DTA-1

Double Engage Night Silent Reversing/Warning Alarm

The **RA-DTA-1** provides audible warning for pedestrians and other road users when a vehicle is manoeuvring or reversing. It has built-in Night-Silent functionality allowing it to be muted at certain times of the day. It is ideal for larger commercial applications such as lorries, trucks, and construction vehicles.

- ▶ Rugged, Robust Casing
- ▶ IP68 Water/Debris-proof Rating
- ▶ Clear Audible Warning



STANDARD REVERSING ALARM

RA-02-102

12-24V Reversing Alarm

The **RA-02-102** is a robust 12-24v IP67-rated reversing alarm suitable for large commercial vehicles such as lorries and trucks.

- ▶ 12-24V Operation
- ▶ 102dB +/- 3dB
- ▶ IP67 Water/Debris-proof rating
- ▶ Robust Nylon Casing



ACCESSORIES

SA-SPM

Speed Pulse & Indicator 2-in-1 Trigger Module

The **SA-SPM** is a speed accessory control unit which uses the tachograph speed signal to switch on the side alert or turn alarm dependant on vehicle speed or indicator use.



SPG-GPS-12

Speed Pulse Module

The **SPG-GPS-12** Speed Pulse Module uses GPS technology to generate two road speed dependant outputs. The first output pulses at a frequency proportional to road speed. The second output changes state when a pre-set road speed is exceeded.

The interface is easy to install and utilises a built-in antenna. It is suitable for 12v and 24v vehicle electrical systems.

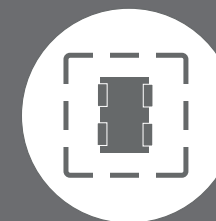


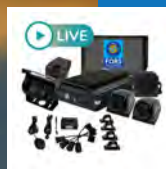
Protect your Workforce in High-Traffic Areas.

Designed to create a visual warning around vehicles operating in high-traffic areas such as loading bays, warehouses and delivery yards, the **SL-BL-10-80 Blue Linear Worklight** is suitable for a number of different applications.

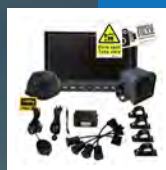
With multi-voltage operation it can be easily installed into the existing vehicle wiring and when combined with multiple lights creates an all-round 'safe space' alerting your work-force to the presence of vehicles such as forklifts, side loaders and HGVs reversing.

- ▶ Emits a Blue Warning Light Strip
- ▶ Multi-Voltage Operation (10-80V)
- ▶ Single Bolt Mounting
- ▶ IP67 Rated
- ▶ Power: 6W
- ▶ E-Marked





FORS Product Kits



DVS Compliant Solutions

FORS PRODUCT KITS



A scheme open to all fleet operators, FORS accreditation aims to raise the levels of safety and quality throughout their operations and to demonstrate exemplary levels of the best practice in safety, efficiency, and environmental protection.

The blind spots of large commercial vehicles are becoming a major factor in collisions on the UK's roads with the increased height and length of many vehicles and machines greatly limiting driver visibility. Driver & Operator positions, vehicle panels, no rear windows or solid bulkheads all create further restrictions

Benefits of FORS-compliant safety solutions

- Provides an Enhanced Duty of Care
- Protects against False Claims
- Increases Fleet Efficiency
- Improves Overall Safety
- Allows for Driver Training or Reward
- Lowers Operational Risk
- Deters Vehicle Damage & Theft
- Protects your Investment



FORS-GOLD-KIT

High-Definition FORS Gold Kit



What's in the 'box'

- 1 x 7" 2 Channel AHD Monitor
- 1 x Full HD 1080p Forward-Facing Camera
- 1 x Full HD 1080p Rear-Facing Camera
- 2 x AHD 720p Side-Facing Cameras
- 4 x Ultrasonic Side-Aleer Sensors
- 1 x 5-Channel DVR with GPS & 4G Functionality
- 1 x 1TB Hard Drive (HDD)
- 1 x Multi-Input Warning Alarm
- 1 x Fitting Accessories Cables

FORS-GOLD-KIT

High-Definition FORS Silver Kit



What's in the 'box'

- 1 x 7" 2 Channel AHD Monitor
- 1 x Full HD 1080p Forward-Facing Camera
- 1 x Full HD 1080p Rear-Facing Camera
- 2 x AHD 720p Side-Facing Cameras
- 4 x Ultrasonic Side-Aleer Sensors
- 1 x 5-Channel DVR with GPS Functionality
- 1 x 1TB Hard Drive (HDD)
- Multi-Input Warning Alarm
- Fitting Accessories Cables

DVS COMPLIANT SOLUTIONS

The Progressive Safety System is a series of vehicle safety enhancements built around the initial DVS 'Safe System' launched back in 2019, with the emphasis on achieving zero deaths or serious injuries on London's roads by 2041.

The Progressive Safe System (PSS) enhancements have been developed based on consultations and reflect the latest equipment and technologies available in the market. Under this new system, all HGVs must now meet a minimum three-star DVS rating from 28th October 2024.

To give the freight industry enough time to obtain, fit and validate new equipment where required, TfL have applied a limited grace period for vehicles that have registered with TfL by 28 October 2024 and can demonstrate they have taken steps to arrange for the fitting of a Progressive Safe System (PSS).

What are the Progressive Safe System requirements



Any Operational Camera Monitoring System must be fitted to the nearside of the vehicle, to completely eliminate any remaining blind spot areas.

[VIEW RANGE >>](#)



A Blindspot Information System (BSIS) with 'active' sensors that provides adequate alerts to the presence of Vulnerable road users and NOT roadside furniture. It must be fitted to the nearside of the vehicle with a detection range 2m (high), 2.2m from the side and 9m from the front. A vehicle that complies with UNECE Regulation 151 will meet this requirement.

[FIND OUT MORE >>](#)



A Moving-off Information system (MOIS) must be fitted to the front of the vehicle to warn the driver to the presence of pedestrians or cyclists entering the front blind spot area. It must activate to a range of 2m, and as like the BSIS, not detect up roadside furniture or parked vehicles. Vehicles that comply with UNECE Regulation 159, will meet this requirements

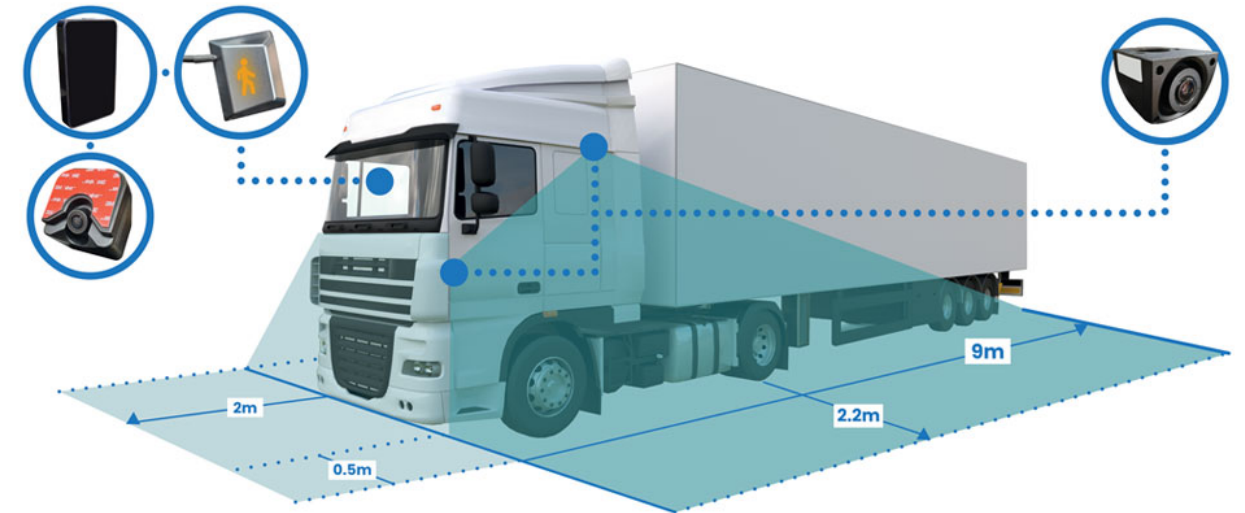
[FIND OUT MORE >>](#)



An audible vehicle manoeuvring warning must be fitted to all vehicles including those with left-hand drive to ensure all vehicles have the ability to warn both pedestrians or cyclists of an intended manoeuvre.

[VIEW RANGE >>](#)

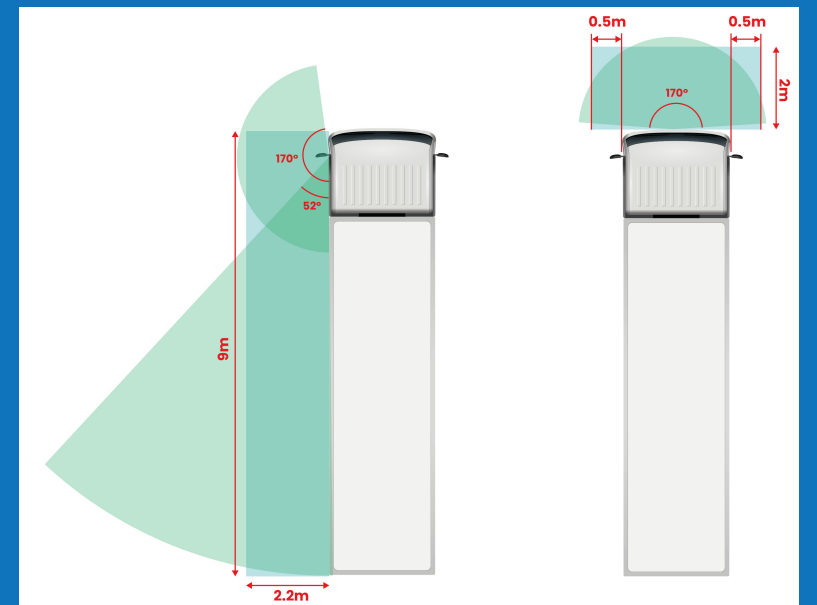
Find out how we can help with your PSS requirements



The BSIS-MOIS-AI3C is a High Performance Combined Blind Spot & Moving-Off Information System with Full HD 1080p Cameras together with AI-powered warning system and driver alerts.

Designed to conform to the new TfL Direct Vision regulations, It utilises powerful algorithms to identify pedestrians, cyclists and other vulnerable road users (VRUs) within the detection zones stipulated by the new Progressive Safe System.

- Full HD 1080p Forward-Detection Camera
- Super-Wide 1080p Road-Facing Camera
- Rear-View Full HD 1080p Camera
- 6-Axis G-Sensor designed to detect Rapid Acceleration, Braking, Turning and Collision Detection
- Supports the addition of a Forward-Facing camera solution (for example MOIS)
- Self-Learning Motion Trend Analysis Algorithm to eliminate invalid alarms
- Simple Installation & Set-up



[CLICK HERE FOR FULL SPECIFICATIONS >>](#)



RM1800 Range

- Radio-only
- Radio/Bluetooth
- Radio/Bluetooth/DAB/DAB+



RM2000 Range

- Radio-only
- Radio/Bluetooth
- Radio/Bluetooth/DAB/DAB+/CAN

RM1800 RANGE - RADIO ONLY

RM1800WEM

EchoMaster Heavy Duty Headunit - RADIO ONLY

The **RM1800WEM** has been designed for use in a range of heavy-duty vehicles. With its rugged and durable construction and All-Angle Display the RM1800WEM can be installed in multiple locations.

The World Tuner provides radio reception in almost all countries. The RM1800WEM has also been ergonomically designed for ease of use and has both USB and AUX inputs for connection of multiple devices.

- ▶ World FM/AM/LW Tuner
- ▶ 4 x 40 Watts
- ▶ USB/MP3 Functionality
- ▶ 3.5mm AUX Input
- ▶ 1 Amp USB Charging
- ▶ EEPROM Memory
- ▶ Multi-Format ISO Wiring
- ▶ Engineered for Agriculture & Construction



RM1800 RANGE - RADIO / BLUETOOTH

RM1801WEM

EchoMaster Heavy Duty Headunit - Radio/Bluetooth

The **RM1801WEM** has been designed for use in a range of heavy-duty vehicles. With its All Angle Display it can be installed in multiple locations. The World Tuner provides radio reception in almost all countries. It has also been ergonomically designed for ease of use and has both USB and AUX inputs for connection of multiple devices.

- ▶ World FM/AM/LW Tuner
- ▶ Bluetooth Handsfree & Music Streaming
- ▶ 4 x 40 Watts
- ▶ Built-in Microphone
- ▶ External Microphone (optional)
- ▶ 1 Amp USB Charging
- ▶ EEPROM Memory
- ▶ Multi-Format ISO Wiring
- ▶ USB/MP3 Functionality
- ▶ 3.5mm AUX Input
- ▶ Engineered for Agriculture & Construction



RM1800 RANGE – RADIO / BLUETOOTH / DAB/DAB+ HEADUNITS

RM1802WEM

EchoMaster Heavy Duty Headunit – Radio/Bluetooth /DAB/DAB+

The **RM1802WEM** has been designed for use in a range of heavy-duty vehicles. With its rugged and durable construction and All Angle Display the RM1802WEM can be installed in multiple locations. The World Tuner provides radio reception in almost all countries. The RM1802WEM has also been ergonomically designed for ease of use and has both USB and AUX inputs for connection of multiple devices.

- ▶ World FM/AM/LW Tuner
- ▶ Bluetooth Handsfree & Music Streaming
- ▶ DAB/DAB+ Tuner
- ▶ Requires DAB Antenna System
- ▶ 4 x 40 Watts
- ▶ Built-in Microphone
- ▶ External Microphone (optional)
- ▶ 1Amp USB Charging
- ▶ EEPROM Memory
- ▶ Multi-Format ISO Wiring
- ▶ USB/MP3 Functionality
- ▶ 3.5mm AUX Input



DAB-AA1

DAB/DAB+ Windscreen Mount Film Antenna

- ▶ DAB/DAB+ Antenna
- ▶ Right Angle SMB Female Connector
- ▶ Cable Length: 3m

Benefits of the RM2000 Range

Conformal Coating – To seal the circuit board and all vital components eliminating the effect of corrosion, dust and moisture ingress.

72 Hour Open 'Salt Spray' Tested – Designed to eliminate possible dendritic growth and reduce the possible short circuit of components when exposed to harsh environmental factors.

'Hot-Box' Tested – To identify and remove any faulty components by exposing them to high temperature endurance ensuring correct operation.

Chemically Tested – A comprehensive list of common household and automotive chemicals are tested to ensure the units functionality is not affected when exposed to such chemicals.

Designed to Manage Dust & Dirt – All unit openings and exposed areas are rubber sealed to minimise dust & dirt ingress, ensuring their function is not impaired. For example, the screen. Although not sealed, it is shielded with air flow managed to reduce any dust settling between the lens and the display LCD.

Vibration Tested – Reducing the effect of component failure when operated on rough and uneven terrain such as construction and agricultural locations ensuring correct operation.

Robust Button Operation – The fixed front panel of the unit has been designed to withstand heavy user operation when vehicle is in use.

Comprehensive Approvals – The RM2000 range has a comprehensive range of approvals and certifications: RED Approved, CB Approved, CE Approved, E-Marked, FCC-ID, FCC Approval, IC Approval and LVD Approval for worldwide use.



RM2000

Short Chassis Heavy Duty Headunit – Radio Only



- ▶ All Angle Display
- ▶ World Tuner – FM/MW/LW/WB Multi-Band Receiver
- ▶ High Power Output (4 x 40 watts)
- ▶ Permanent Memory (EEPROM)
- ▶ Fixed Front Panel
- ▶ AUX In (Front/Rear option)
- ▶ USB input with Rubber Seal
- ▶ Line Output x 4 (Optional)
- ▶ Media Meta-Data Display with Quick Browse
- ▶ 1A USB charging

RM2001

Short Chassis Heavy Duty Headunit – Radio/B'tooth



- ▶ All Angle Display
- ▶ World Tuner – FM/MW/LW/WB Multi-Band Receiver
- ▶ Automatic A2DP Switching (User Selectable)
- ▶ Voice Control for Handsfree & Music Streaming
- ▶ Phonebook Quick Browse Function
- ▶ High Power Output (4 x 40 watts)
- ▶ Permanent Memory (EEPROM)
- ▶ Fixed Front Panel
- ▶ AUX In (Front/Rear option)
- ▶ USB input with Rubber Seal
- ▶ Line Output x 4 (Optional)
- ▶ Compatible with an External Noise Cancelling Microphone
- ▶ 1A USB charging
- ▶ Engineered for Agriculture & Construction

RM2003

Short Chassis Heavy Duty Head Unit – Radio/B'tooth/DAB



- ▶ All Angle Display
- ▶ World Tuner – FM/MW/LW/WB Multi-Band Receiver
- ▶ Automatic A2DP Switching (User Selectable)
- ▶ Voice Control for Handsfree & Music Streaming
- ▶ Phonebook Quick Browse Function
- ▶ Permanent Memory (EEPROM)
- ▶ Fixed Front Panel
- ▶ AUX In (Front/Rear option)
- ▶ USB input with Rubber Seal
- ▶ Line Output x 4 (Optional)
- ▶ UART and CAN port on rear
- ▶ Media Meta-Data Display with Quick Browse

RM2004

Short-Chassis Heavy Duty Head Unit – Radio/B'tooth/DAB/CAN



- ▶ All Angle Display
- ▶ World Tuner (FM/MW/LW/WB Multi-Band Radio)
- ▶ DAB/DAB+ Functionality
- ▶ Automatic A2DP Switching (User Selectable)
- ▶ Voice Control for Handsfree & Music Streaming
- ▶ Phonebook Quick Browse Function
- ▶ Permanent Memory (EEPROM)
- ▶ Fixed Front Panel
- ▶ AUX In (Front/Rear option)
- ▶ USB input with Rubber Seal
- ▶ Line Output x 4 (Optional)
- ▶ UART and CAN port on rear
- ▶ Media Meta-Data Display with Quick Browse



**AAMP Global, Woolmer Way, Bordon,
Hampshire, GU35 9QE, United Kingdom**

UK/Europe

+44 (0) 1420 487110 - echomaster@aampglobal-eu.com
Technical Support - echotec@aampglobal.com



EchoMaster-eu.com



[@echomastereurope](https://www.facebook.com/echomastereurope)



[@echomastereurope](https://www.linkedin.com/company/echomastereurope)



[@echomastereurope](https://www.instagram.com/echomastereurope)

EchoMaster Europe is a brand of AAMP Global.

