



5-Channel Mobile DVR

with HDD Storage, GPS,
4G & AI-Functionality

The **DVR-150-N-4GG** is a high-performance mobile Digital Video Recorder, boasting 4 AHD camera input channels as well as 1 IPC channel.

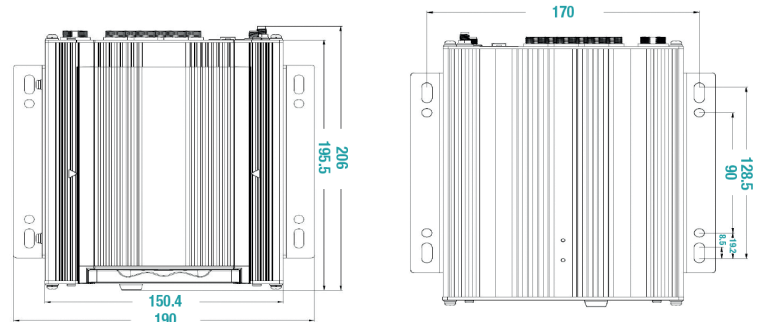
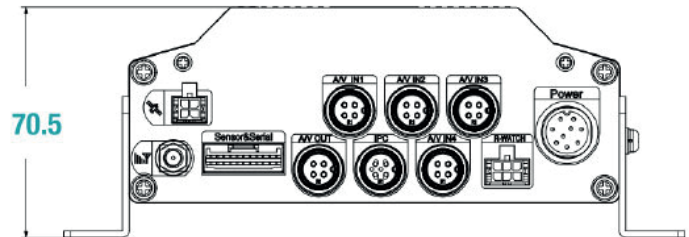
The perfect in-vehicle solution for quality recording and monitoring providing ADAS, Blind Spot Detection and Driver Status Monitor (DSM).



The **DVR-150-N-4GG** comes complete with built-in 4G connectivity and GPS features as well as 1TB HDD video storage and a trigger output to allow easy integration with telematics devices.

Key Features

- ▶ Full HD 1080P/720P/D1 resolution
- ▶ 4 AHD Channels + 1 IPC channel
- ▶ Up to 1TB HDD
- ▶ Lockable Storage case (to protect data)
- ▶ Integrated GPS connectivity
- ▶ Built-in 6-Axis G-Shock sensor
- ▶ 12V-24V compatible (8V-36V input)
- ▶ Additional Trigger in and outputs allow for integration with telematics devices



3G/4G



HDD STORAGE



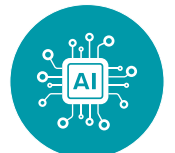
GPS / GLONASS



TAMPER-PROOF



12V / 24V



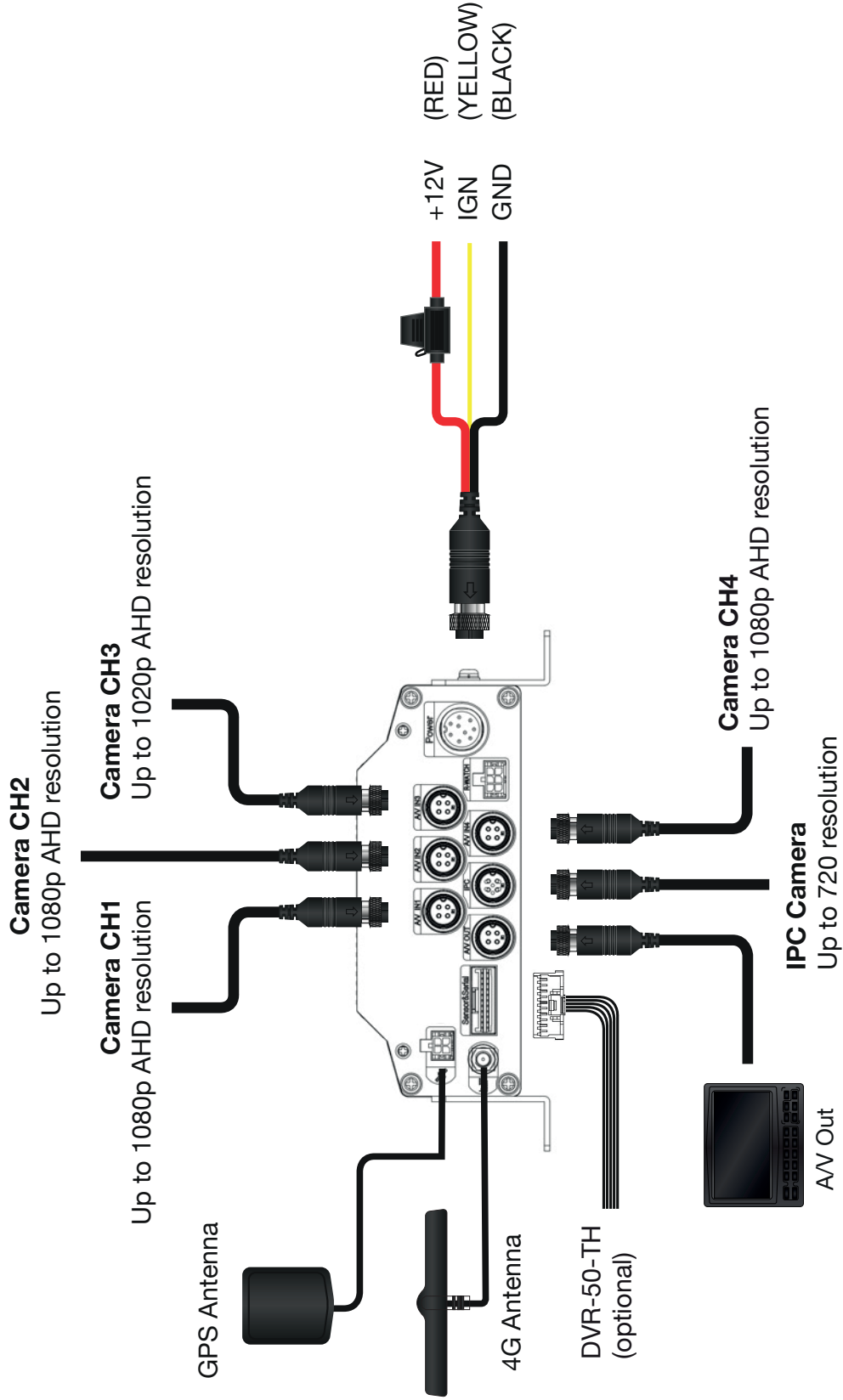
AI-FUNCTIONALITY

echomaster@aampglobal-eu.com

Call +44(0)1420 487110

EchoMaster-eu.com

Follow @EchoMasterEurope



System	
Operating System	Linux 4.9
Control Mode	CP4, mouse, EasyCheck, network (4G)
Video	
Operating System	Linux 4.9
Control Mode	CP4, mouse, EasyCheck, network (4G)
Total Resources* (equipped with 2-channel AI)	PAL: 1 x 1080P @ 25fps (ADAS) + 1 x 720P @ 25fps (DMS) + 2 x 720P @ 15fps (AHD) + 1 x 1080P @ 15fps (IPC) OR 4 x 720 @ 25fps (AHD) + 1 x 1080P @ 15fps (IPC) NTSC: 1 x 1080P @ 30fps (ADAS) + 1 x 720P @ 30fps (DMS) + 2 x 720P @ 15fps (AHD) + 1 x 1080P@15fps (IPC) OR 4 x 720 @ 30fps (AHD) + 1 x 1080P @ 15fps (IPC)
Total Resources (not using self-equipped AI)	PAL 4 x 1080P @ 15fps (AHD) + 1 x 1080P @ 25fps (IPC) OR 4*720@25fps (AHD) + 1 x 1080P @ 25fps (IPC) NTSC 4 x 1080P @ 15fps (AHD) + 1 x 1080P @ 30fps (IPC) OR 4 x 720 @ 30fps (AHD) + 1 x 1080P @ 30fps (IPC)
Video Signal Standards	Level: 1 Vpp; Impedance: 75 Ohm NTSC/PAL (optional)
Audio	
Input	5 Channels (1-Channel IPC Audio)
Output	1 Channel
Audio Signal Standards	Level: 2 Vpp; Input Impedance: 4.7 kilohm
Display	
Screen Split	1/4/9-Screen Display
Screen Display	Positioning Information, Alarms, License Plate Numbers, Driving Speed, Time, etc.
Operating Interface	GUI
Recording	
Video Compression Format	H.264 / H.265
Audio Compression Format	ADPCM,G.711U
Image Quality	Levels 1–8 Adjustable (Preferably Level 1)
Recording Mode	Startup / Manual / Scheduled / Alarm Event Recording
Alarm Prerecording	0 – 60 min
Alarm Recording Delay	0 - 30 min
Playback	
Playback Channel	1-Channel Local Playback
Search Mode	By Date/Time, Channel, or Event
Network	
IPC Ethernet	6-Pin Aviation Plug (1 x 100M, PON Power Supply)

Network	
2G/4G	Supported For Europe and Asia EC25-EC LTE FDD: B1/B3/B7/B8/B20/B28A WCDMA: B1/B8 GSM: B3/B8
Positioning	
GPS	Positioning, Speed Detection, and Time Synchronisation GPS L1 1575.42 MHz BDS B1 1561.098MH GALILEO E1B/C1 GLONASS L1OF 1602MHz SBAS: WAAS, EGNOS, MSAS, GAGAN
Sensor	
G-Sensor	Built-in 6-Axis Inertial Sensor
Storage	
Hard Disk	1 x 2.5-inch SATA Hard Disk (HDD)
Ports	
USB	1 x USB2.0
Serial Port	1 x RS232; 1 x RS485(R-WATCH)
IO	8-channel input and 2-channel output
Speed	1-channel pulse speed detection
Control Panel	CP4 (accessories optional)
Intercom	1 x MIC port
Power Supply	
Input	DC 8 - 36 V
Output	5V @ 500 mA
Maximum Typical Power	29 W (5-Channels with IR on connected, CP4 connected (5V - OUT connected))
Standby Power Consumption	0.7 W
Physical Characteristics	
Dimensions (mm)	206.0 x 190.0 x 70.5
Weight (kg)	1.2
Environment	
Operating Temperature	-40°C - +70°C
Operating Humidity	8% to 90% (Non-Condensing)