



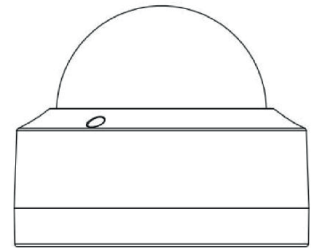
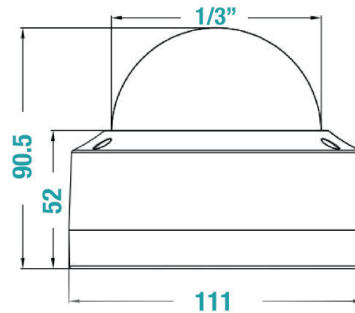
Dome Camera with Built-in Audio & SD Card

The **CAM-DMSD** is an High Quality Tamper-proof CMOS Dome Camera with Built-in Audio and SD card slot. The camera also comes with a range of features including Motion Detection, Privacy Mask & Mirror options along with an IP66 Water/Debris-proof rating to minimise the ingress of dirt and moisture whatever the conditions.



Key Features

- ▶ 1/2.9" CMOS Sensor
- ▶ Tamper-proof Housing
- ▶ IP66 Water/Debris-proof Rated
- ▶ 18 LEDS
- ▶ Operates at 0.01 LUX
- ▶ Built-in Audio
- ▶ Support SD Card Storage
- ▶ Motion Detection, Privacy Mask, Mirror, Flip functionality



Box Contents

- ▶ Camera
- ▶ Mounting Hardware

Wiring Diagram



12V OUTPUT >



Lens	2.8/3.6mm Fixed/VF/AF Lens
Sensor Type	1/2.9" CMOS
TV Lines	1000
Resolution	1080P
LEDs	18 SMD IR
Illumination	0.01 LUX
Viewing Angle	120°
Mirror Image	YES
Parking Lines	NO
IP Rating	IP66
Microphone	BUILT-IN
Power Supply	12V DC \pm 1
Operating Temperature	-20°C - +75° (RH 95% MAX)
Storage Temperature	-30°C - +85° (RH 95% MAX)
Dimensions (W x D x H)	111 x 111 x 90.5